

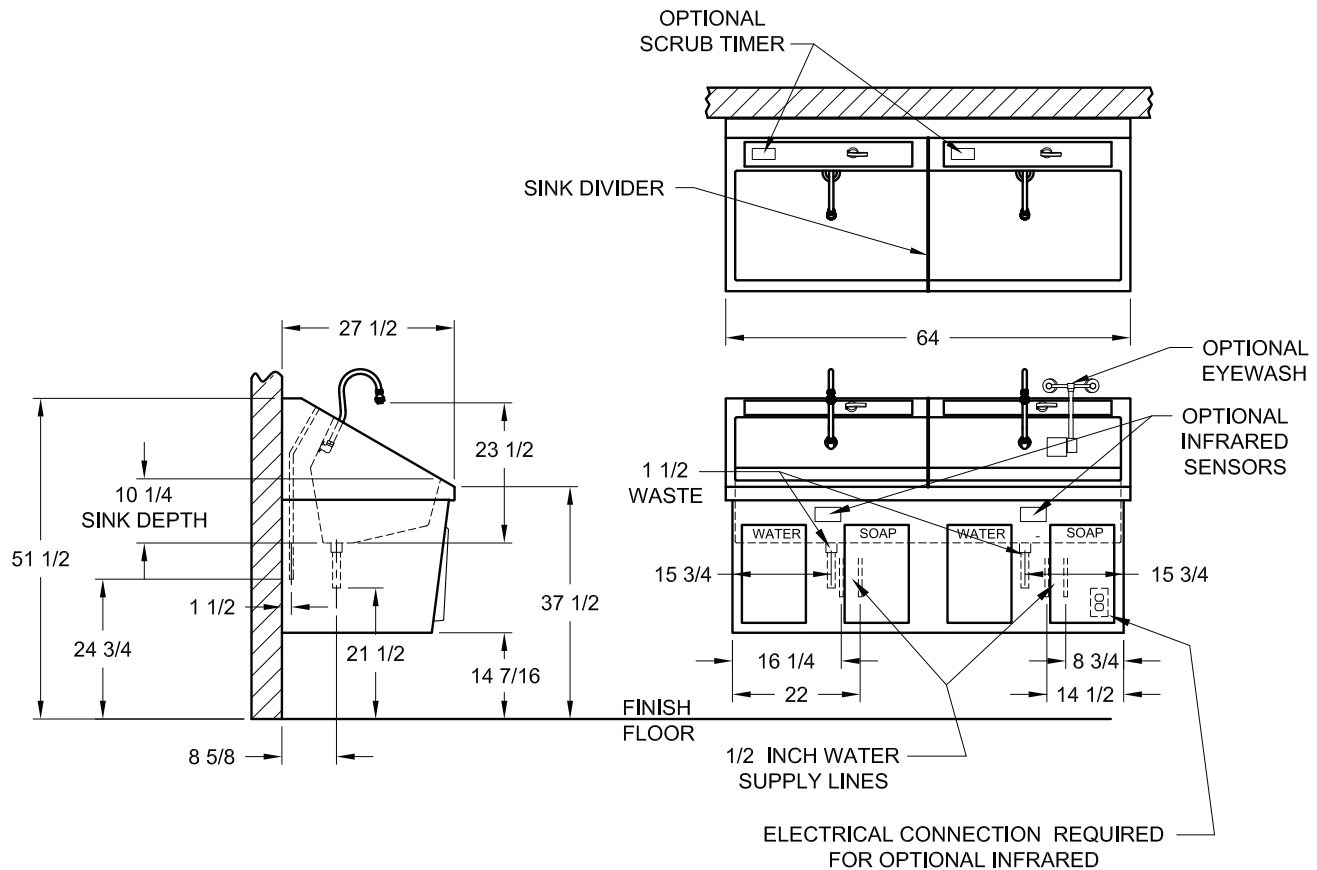
# Surgical Scrub Sinks

## SS-Series



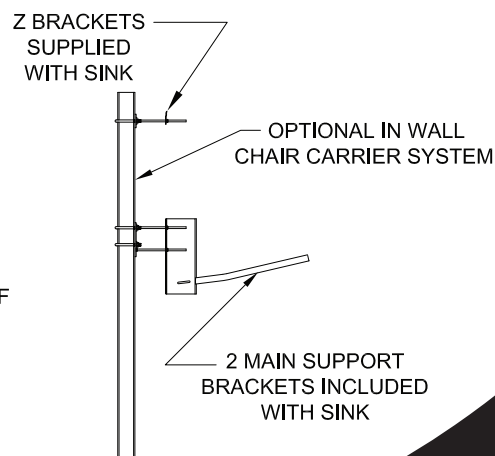
### Model # SS64 (Dual Station)

## DIMENSIONS



#### NOTES:

1. MATERIAL:  
SINK BASIN; 14 GAUGE  
304 STAINLESS STEEL  
SINK SKIRT; 16 GAUGE  
304 STAINLESS STEEL
2. ALL PLUMBING 1/2" COPPER OR BRASS PIPE.  
THE SINK WILL BE FURNISHED WITH IN LINE CHECK  
VALVES ON SUPPLY LINES.
3. UTILITY REQUIREMENT  
COLD WATER 20 TO 50 PSIG 70 DEG F MAX  
HOT WATER 20 TO 50 PSIG 120 DEG F TO 140 DEG F
4. POWER REQUIREMENTS (FOR SENSOR OPERATIONS)  
120 VAC, 60 Hz, SINGLE PHASE, 3.0 AMP OR  
220 VAC, 60 Hz, SINGLE PHASE, 1.5 AMP.  
INSTALLED PER LOCAL BUILDING CODES.
5. NET WEIGHT OF SINK 230 LB.



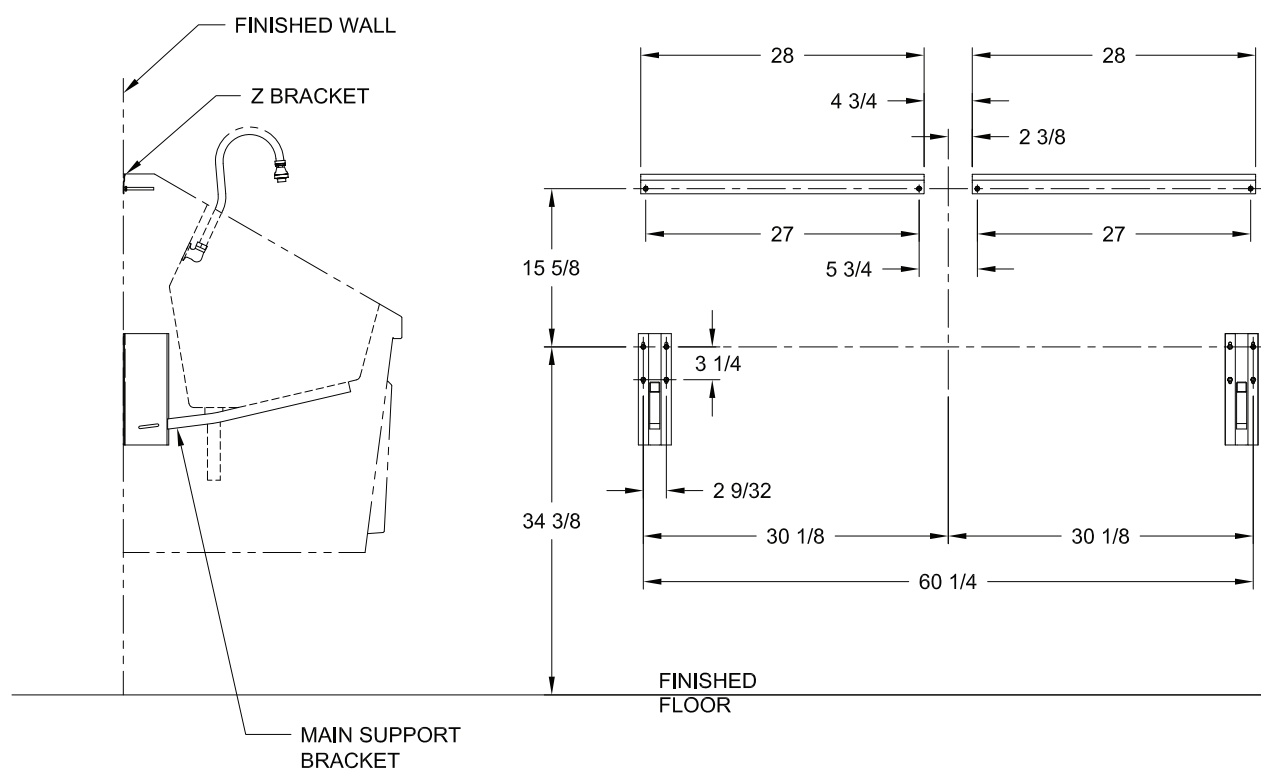
# Surgical Scrub Sinks

## SS-Series



### Model # SS64 (Dual Station) with Wall Mounting Brackets (included)

## DIMENSIONS



# Surgical Scrub Sinks

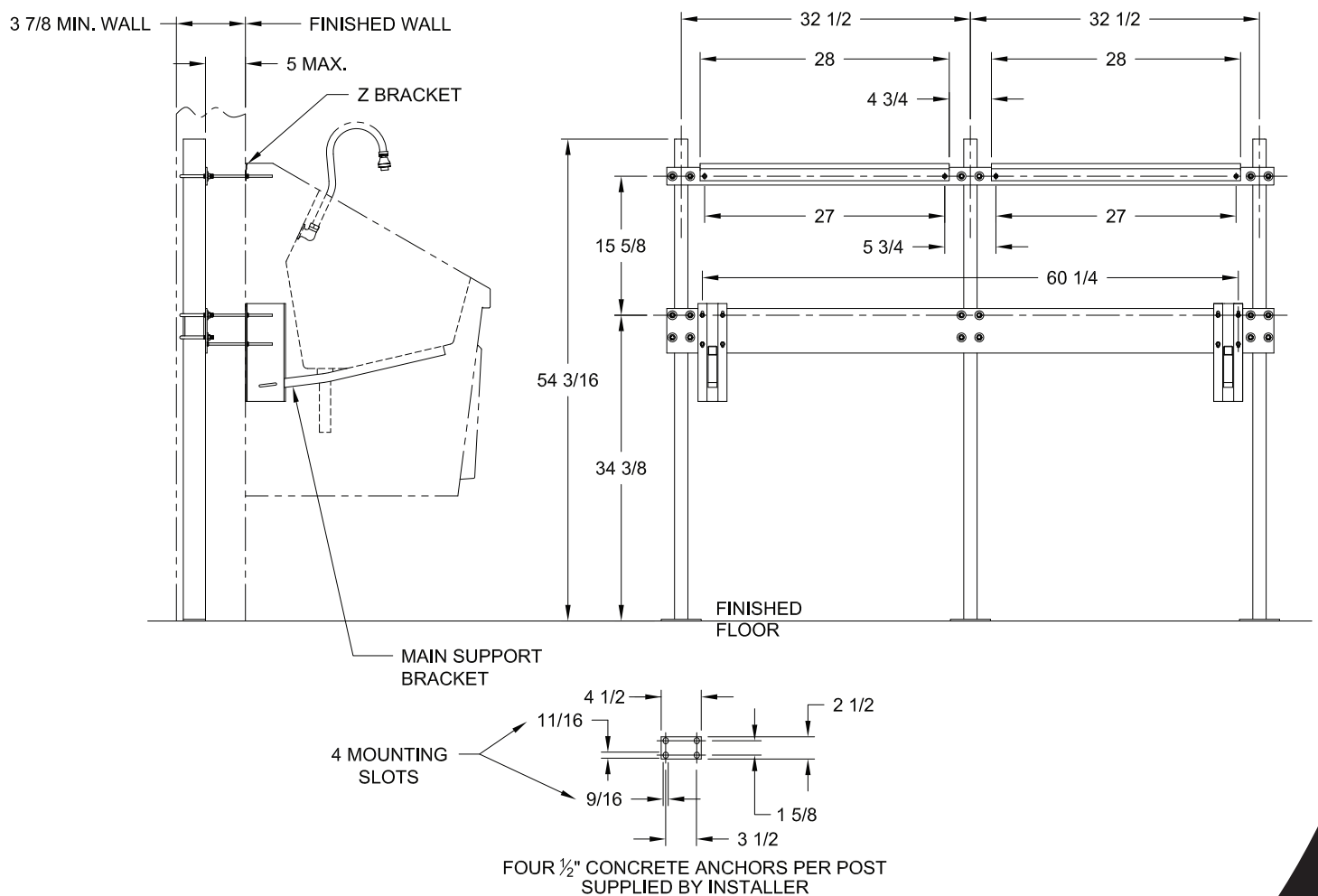
## SS-Series



### Model # SS64 (Dual Station)

with recommended optional In-Wall Chair Carrier System (S0002)

## DIMENSIONS



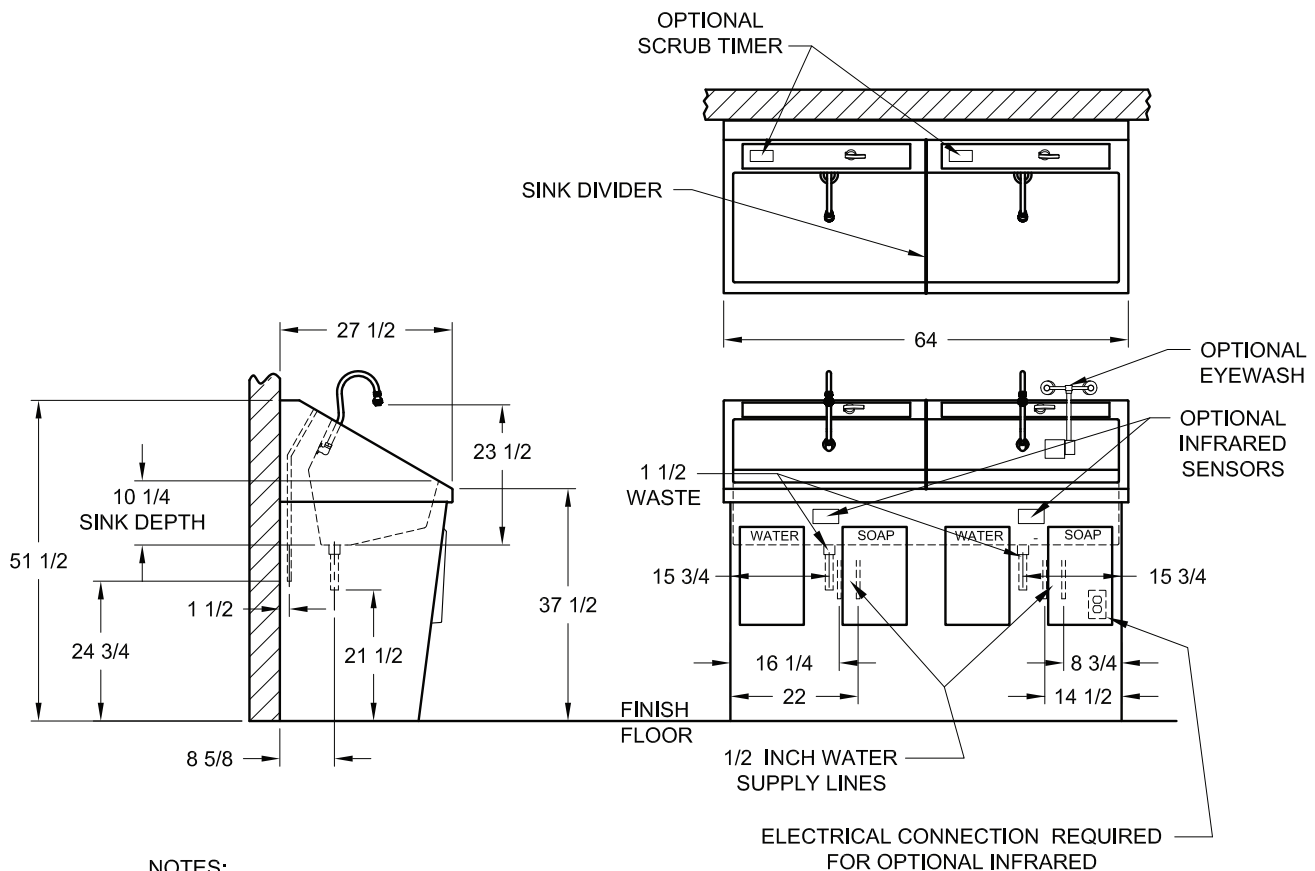
# Surgical Scrub Sinks

## SS-Series



### Model # SS64-PB (Dual Station) with Pedestal Base

## DIMENSIONS



#### NOTES:

1. MATERIAL:  
SINK BASIN; 14 GAUGE  
304 STAINLESS STEEL  
SINK SKIRT; 16 GAUGE  
304 STAINLESS STEEL
2. ALL PLUMBING 1/2" COPPER OR BRASS PIPE.  
THE SINK WILL BE FURNISHED WITH IN LINE CHECK VALVES ON SUPPLY LINES.
3. UTILITY REQUIREMENT  
COLD WATER 20 TO 50 PSIG 70 DEG F MAX  
HOT WATER 20 TO 50 PSIG 120 DEG F TO 140 DEG F
4. POWER REQUIREMENTS (FOR SENSOR OPERATIONS)  
120 VAC, 60 Hz, SINGLE PHASE, 3.0 AMP OR  
220 VAC, 60 Hz, SINGLE PHASE, 1.5 AMP.  
INSTALLED PER LOCAL BUILDING CODES.

MAC Medical, Inc.  
Publication No. SPEC-SS64  
November 2016

Information regarding this product is  
subject to change without prior notice.