

Stainless Steel Case Carts



MAC Medical, Inc. manufactures a full line of stainless steel case carts that feature fully welded construction for strength and durability. Choose from several designs including Closed, Vertical Handle, and Open Case Carts. Our engineering capabilities allow us to custom design any specific case cart to satisfy any need your facility may have.

To place an order, contact our customer service department at **618-476-3550** or **877-828-9975**, or by email at **sales@macmedical.com**.

[Closed Case Carts](#)

[Vertical Handle Case Carts](#)

[Open Case Carts](#)

[View more information on the back >>](#)

MADE
IN THE **USA** 



www.macmedical.com



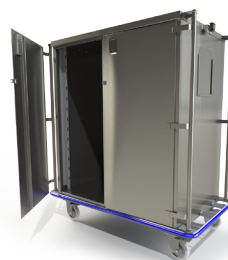
Closed Case Carts

STANDARD FEATURES

- Fully welded construction
- 8.5" x 11" card holder
- Sound-proofed tops and doors for quiet operation
- Adjustable perforated roll out stainless steel shelves – *Redesigned functionality!*
- Exterior push handle for better control
- Full wrap around non-marring bumper
- Tamper evidence security tags
- Positive lock door latches
- 6" maintenance-free, high temp, high pressure stainless steel casters with sealed ball bearings (3 swivel & 1 fixed directional)

OPTIONAL FEATURES

- Adjustable solid shelf (roll out) – *Redesigned functionality!*
- Adjustable solid shelf (non roll out)
- Adjustable perforated shelf (non roll out)
- Adjustable wire shelf (roll out) – *Redesigned functionality!*
- Adjustable wire shelf (non roll out)
- No shelves
- Side extensions
- Flag system (one each of red, yellow, and green)
- Clean/dirty indicator
- Tow hitch
- Composite directional locking casters
- Total locking casters



New Vertical Handle Case Carts

Ergonomically Friendly

STANDARD FEATURES

- **Ergonomically friendly** vertical handles for precise control
- Fully welded construction
- 8.5" x 11" card holder
- Sound-proofed tops and doors for quiet operation
- Adjustable perforated roll out stainless steel shelves – *Redesigned functionality!*
- Full wrap around non-marring bumper
- Tamper evidence security tags
- Positive lock door latches
- 6" maintenance-free, high temp, high pressure stainless steel casters with sealed ball bearings (3 swivel & 1 fixed directional)

OPTIONAL FEATURES

- Adjustable solid shelf (roll out) – *Redesigned functionality!*
- Adjustable solid shelf (non roll out)
- Adjustable perforated shelf (non roll out)
- Adjustable wire shelf (roll out) – *Redesigned functionality!*
- Adjustable wire shelf (non roll out)
- No shelves
- Side extensions
- Flag system (one each of red, yellow, and green)
- Clean/dirty indicator
- Tow hitch
- Composite directional locking casters
- Total locking casters
- Silicon door gasket for complete sterility control
- Cool touch handles – *New!*



Open Case Carts

STANDARD FEATURES

- Open design
- Sturdy built cart – perfect for storage, supplies, linens, or distribution
- Full wrap around non-marring bumper
- Stainless steel guard rail
- 6" composite directional locking casters

OPTIONAL FEATURES

- Adjustable solid shelf (non roll out)
- Adjustable perforated shelf (non roll out)
- Adjustable wire shelf (non roll out)
- Fixed shelving
- Wire grid on back side
- 6" maintenance-free, high temp, high pressure stainless steel casters with sealed ball bearings (3 swivel & 1 fixed directional)
- Total locking casters
- 6" plastic bin
- 10" plastic bin

For questions, or to place an order, contact our customer service department at **618-476-3550** or **877-828-9975**, or by email at **sales@macmedical.com**.