

Stainless Steel Casework

Plan | Build | Install



MADE
IN THE **USA** 

mac
MEDICAL

www.macmedical.com



About Our Company

MAC Medical, Inc. manufactures top quality medical equipment including Warming Cabinets, Sinks, Tables, Casework, Case Carts, IV Stands, Mayo Stands, Linen Hampers, and many other stainless steel products. To complement our stainless steel products, we have expanded our product line to include Plastic Laminate Casework and carts for a variety of spaces including medical, dental, laboratory, and more.

Over the last two decades, MAC Medical has grown to more than 140 full-time employees operating in a 122,500 square foot manufacturing facility and 48,500 square foot corporate office. Both facilities are located in Southern Illinois making this an ideal place for centralized distribution to the entire United States. Not limited to the United States, MAC Medical has product in over 20 countries worldwide.

Founded as a solutions-based company, MAC Medical still maintains that as its core competency. With no project too large or too small, MAC Medical is committed to providing solutions for customer needs with its superior service and American made products.



Corporate Office

200 Admiral Weinel Boulevard
Columbia, Illinois 62236

Manufacturing Plant

820 South Mulberry Street
Millstadt, Illinois 62260

Phone: 618-476-3550
Toll Free: 877-828-9975
Fax: 618-476-3337
sales@macmedical.com
www.macmedical.com

We manufacture the following products:

- Warming Cabinets
- Open & Closed Case Carts
- Surgical Scrub Sinks
- Processing Sinks
- Utility Carts
- Tables
- IV Stands
- Mayo Stands
- Solution Stands
- Linen Hampers
- Kick Buckets
- Step Stools
- Transport Stretchers
- Casework
- Prep & Pack Workstations
- MR Conditional Products
- Plastic Laminate Casework
- Laminate & Stainless Steel Mobile Medical Carts
- Any other stainless steel need



MADE IN THE USA



@macmedicalinc

Customer needs are our first priority.

For questions or to place an order, contact our customer service department at 618-476-3550 or 877-828-9975, or by email at sales@macmedical.com.

INSPIRED
TO BE BETTER

Call Toll Free: 877-828-9975

Table of Contents

| | | | |
|-------------------------------------|-----------|----------------------------------------|-----------|
| Autodesk® Revit® Information | 2 | Operating Room Cabinets | 18 |
| From Concept To Completion | 3 | Table Accessory Cabinets | 19 |
| Wall Cabinets | 5 | Equipment Supply Cabinets | 19 |
| Single Solid Door | 5 | Desk Cabinets | 20 |
| Single Glass Door | 5 | Miscellaneous Supply Cabinets | 20 |
| Dual Solid Doors | 6 | Custom Features for OR Cabinets | 20 |
| Dual Glass Doors | 7 | Operating Room Bases (12" High) | 21 |
| No Doors | 8 | Corner Guards | 21 |
| Dual Sliding Glass Doors | 9 | Counter Tops | 21 |
| Custom Features for Wall Cabinets | 9 | Sloping Tops | 22 |
| Base Cabinets | 10 | Wall Shelves | 23 |
| Single Solid Door | 10 | Green Initiative | 24 |
| Single Solid Door, Single Drawer | 10 | Warranty Information | 25 |
| Single Solid Door, Sink Cabinet | 11 | | |
| 4 Drawers | 11 | | |
| 3 Drawers | 12 | | |
| No Doors | 12 | | |
| Dual Solid Doors | 13 | | |
| Dual Solid Doors, Dual Drawers | 13 | | |
| Dual Solid Doors, Sink Cabinet | 14 | | |
| Dual Solid Doors, Single Drawer | 14 | | |
| Custom Features for Base Cabinets | 14 | | |
| High Cabinets | 15 | | |
| Single Solid Door | 15 | | |
| Single Glass Door | 15 | | |
| Dual Solid Doors | 16 | | |
| Dual Glass Doors | 16 | | |
| Dual Sliding Solid Doors | 17 | | |
| Dual Sliding Glass Doors | 17 | | |
| Custom Features for High Cabinets | 17 | | |

Quality Built,
American Made





AUTODESK®
REVIT®

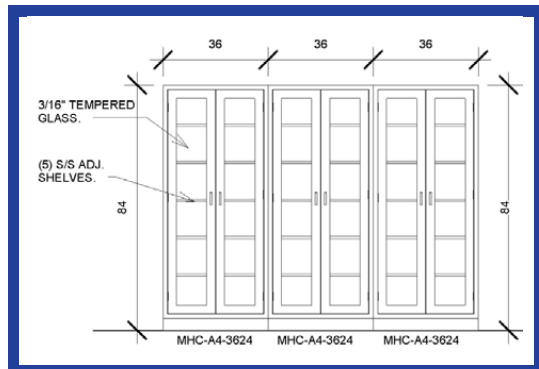
MAC Medical utilizes Autodesk Revit (BIM – Building Information Modeling) software for our stainless steel casework. This software allows us to design a complete casework build-out in 3D, and annotate the model with 2D drafting elements. The Revit work environment allows us to quickly manipulate build-out iterations, and also allows our experienced engineering team to create realistic 3D projects. Revit, being parametric in nature, allows us to modify a given component by changing predefined parameters such as height, width, and depth, along with adding any of our optional features.

Who benefits from this capability?

- Architects
- Planners
- Designers
- Contractors
- Facility Owners
- End Users



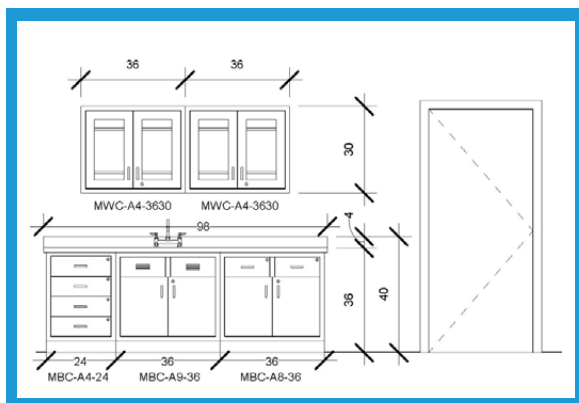
For Revit family models & product spec sheets, visit the Casework section at www.macmedical.com



Stainless Steel Casework

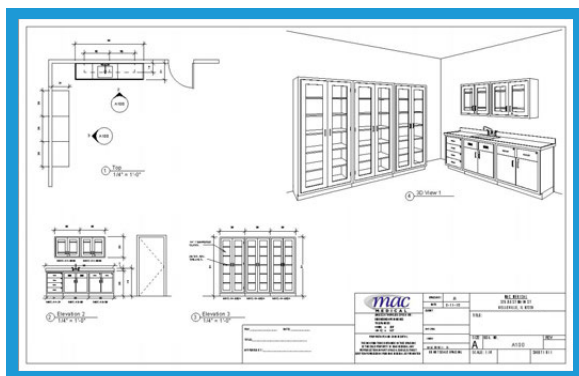
From Concept To Completion

1 Plan



MAC Medical's experienced team of engineers can help conceptualize and plan a solution for your casework needs. Whether those needs are simply one cabinet or a complex build-out, we pride ourselves on helping you find a solution that works best for your facility. We will start with a proof of concept, and will revise your drawings until they meet your requirements.

2 Build



Once the engineering drawings have been finalized and approved, your casework project starts to come to life in our 100,000 square foot manufacturing facility. After your project has been built, MAC Medical makes sure your product passes our rigorous quality and standards check list prior to shipment. Quality built and American made continues to be our competitive advantage.

3 Install



When your casework arrives at its destination, MAC Medical makes sure installation happens smoothly and timely. We communicate with the contractors/installers to ensure your product is installed according to your specifications. In short, MAC Medical stays involved from concept to completion.

Customer needs are our first priority.

For questions or to place an order, contact our customer service department at **618-476-3550** or **877-828-9975**, or by email at sales@macmedical.com.



Wall
Cabinets

Magnetic door catches
with a quiet close!



High
Cabinets



Base
Cabinets

MAC Medical's full line of stainless steel Wall Cabinets, Base Cabinets, and High Cabinets can be configured in a number of ways to create the arrangement your facility needs. Choose from solid doors, glass doors, sliding doors, or no doors. Many optional features are available including cam locks, tee handles, electronic keypad door lock, and sloping tops to name a few.

STANDARD FEATURES

- Magnetic door catches with a quiet close
- Seamless front face on all cabinets
- Revit® files & spec sheets available
- Fully welded construction
- Type 300 series stainless steel
- Stainless steel shelves (where applicable, shelves adjust in 1 ½" increments)
- 4" standard pull handle (excludes sliding doors)
- ⅜" tempered glass (where applicable)
- Adjustable feet on Base Cabinets & High Cabinets



Wall Cabinets Single Solid Door

MWC-A1-2430

| Model # | Width | Height | Depth | Shelves | Optional Features |
|-------------|---------------|----------------|---------------|---------|---------------------------------------------------------------------------------------------------------------------------------------------------------------------------------------------------------------------------------------------------------------------|
| MWC-A1-1818 | 18" (457.2mm) | 18" (457.2mm) | 13" (330.2mm) | 1 | <ul style="list-style-type: none"> • Cam lock • Tee handle • Tee handle with key lock • Electronic keypad door lock • Right or left hinge • Pegboard back • Sloping top (see table on page 22) |
| MWC-A1-1824 | 18" (457.2mm) | 24" (609.6mm) | 13" (330.2mm) | 1 | |
| MWC-A1-1830 | 18" (457.2mm) | 30" (762mm) | 13" (330.2mm) | 2 | |
| MWC-A1-1836 | 18" (457.2mm) | 36" (914.4mm) | 13" (330.2mm) | 2 | |
| MWC-A1-1848 | 18" (457.2mm) | 48" (1219.2mm) | 13" (330.2mm) | 3 | |
| MWC-A1-2418 | 24" (609.6mm) | 18" (457.2mm) | 13" (330.2mm) | 1 | |
| MWC-A1-2424 | 24" (609.6mm) | 24" (609.6mm) | 13" (330.2mm) | 1 | |
| MWC-A1-2430 | 24" (609.6mm) | 30" (762mm) | 13" (330.2mm) | 2 | |
| MWC-A1-2436 | 24" (609.6mm) | 36" (914.4mm) | 13" (330.2mm) | 2 | |
| MWC-A1-2448 | 24" (609.6mm) | 48" (1219.2mm) | 13" (330.2mm) | 3 | |

Additional sizes available for specific requirements; please contact us for further assistance

Additional shelving available for purchase



Wall Cabinets Single Glass Door

MWC-A2-2430

| Model # | Width | Height | Depth | Shelves | Optional Features |
|-------------|---------------|----------------|---------------|---------|---------------------------------------------------------------------------------------------------------------------------------------------------------------------------------------------------------------------------------------------------------------------|
| MWC-A2-1818 | 18" (457.2mm) | 18" (457.2mm) | 13" (330.2mm) | 1 | <ul style="list-style-type: none"> • Cam lock • Tee handle • Tee handle with key lock • Electronic keypad door lock • Right or left hinge • Pegboard back • Sloping top (see table on page 22) |
| MWC-A2-1824 | 18" (457.2mm) | 24" (609.6mm) | 13" (330.2mm) | 1 | |
| MWC-A2-1830 | 18" (457.2mm) | 30" (762mm) | 13" (330.2mm) | 2 | |
| MWC-A2-1836 | 18" (457.2mm) | 36" (914.4mm) | 13" (330.2mm) | 2 | |
| MWC-A2-1848 | 18" (457.2mm) | 48" (1219.2mm) | 13" (330.2mm) | 3 | |
| MWC-A2-2418 | 24" (609.6mm) | 18" (457.2mm) | 13" (330.2mm) | 1 | |
| MWC-A2-2424 | 24" (609.6mm) | 24" (609.6mm) | 13" (330.2mm) | 1 | |
| MWC-A2-2430 | 24" (609.6mm) | 30" (762mm) | 13" (330.2mm) | 2 | |
| MWC-A2-2436 | 24" (609.6mm) | 36" (914.4mm) | 13" (330.2mm) | 2 | |
| MWC-A2-2448 | 24" (609.6mm) | 48" (1219.2mm) | 13" (330.2mm) | 3 | |

Additional sizes available for specific requirements; please contact us for further assistance

Additional shelving available for purchase



Wall Cabinets Dual Solid Doors

MWC-A3-3630 (shown with optional cam lock)

| Model # | Width | Height | Depth | Shelves | Optional Features |
|-------------|----------------|----------------|---------------|---------|----------------------------------------------------------------------------------------------------------------------------------------------------------------------------------------------------------------------------------------|
| MWC-A3-3018 | 30" (762mm) | 18" (457.2mm) | 13" (330.2mm) | 1 | <ul style="list-style-type: none"> • Cam lock • Tee handles • Tee handles with key lock • Electronic keypad door lock • Pegboard back • Sloping top (see table on page 22) |
| MWC-A3-3024 | 30" (762mm) | 24" (609.6mm) | 13" (330.2mm) | 1 | |
| MWC-A3-3030 | 30" (762mm) | 30" (762mm) | 13" (330.2mm) | 2 | |
| MWC-A3-3036 | 30" (762mm) | 36" (914.4mm) | 13" (330.2mm) | 2 | |
| MWC-A3-3048 | 30" (762mm) | 48" (1219.2mm) | 13" (330.2mm) | 3 | |
| MWC-A3-3618 | 36" (914.4mm) | 18" (457.2mm) | 13" (330.2mm) | 1 | |
| MWC-A3-3624 | 36" (914.4mm) | 24" (609.6mm) | 13" (330.2mm) | 1 | |
| MWC-A3-3630 | 36" (914.4mm) | 30" (762mm) | 13" (330.2mm) | 2 | |
| MWC-A3-3636 | 36" (914.4mm) | 36" (914.4mm) | 13" (330.2mm) | 2 | |
| MWC-A3-3648 | 36" (914.4mm) | 48" (1219.2mm) | 13" (330.2mm) | 3 | |
| MWC-A3-4218 | 42" (1066.8mm) | 18" (457.2mm) | 13" (330.2mm) | 1 | |
| MWC-A3-4224 | 42" (1066.8mm) | 24" (609.6mm) | 13" (330.2mm) | 1 | |
| MWC-A3-4230 | 42" (1066.8mm) | 30" (762mm) | 13" (330.2mm) | 2 | |
| MWC-A3-4236 | 42" (1066.8mm) | 36" (914.4mm) | 13" (330.2mm) | 2 | |
| MWC-A3-4248 | 42" (1066.8mm) | 48" (1219.2mm) | 13" (330.2mm) | 3 | |
| MWC-A3-4818 | 48" (1219.2mm) | 18" (457.2mm) | 13" (330.2mm) | 1 | |
| MWC-A3-4824 | 48" (1219.2mm) | 24" (609.6mm) | 13" (330.2mm) | 1 | |
| MWC-A3-4830 | 48" (1219.2mm) | 30" (762mm) | 13" (330.2mm) | 2 | |
| MWC-A3-4836 | 48" (1219.2mm) | 36" (914.4mm) | 13" (330.2mm) | 2 | |
| MWC-A3-4848 | 48" (1219.2mm) | 48" (1219.2mm) | 13" (330.2mm) | 3 | |

Additional sizes available for specific requirements; please contact us for further assistance

Additional shelving available for purchase



Wall Cabinets Dual Glass Doors

MWC-A4-3630 (shown with optional cam lock)

| Model # | Width | Height | Depth | Shelves | Optional Features |
|-------------|----------------|----------------|---------------|---------|----------------------------------------------------------------------------------------------------------------------------------------------------------------------------------------------------------------------------------------|
| MWC-A4-3018 | 30" (762mm) | 18" (457.2mm) | 13" (330.2mm) | 1 | <ul style="list-style-type: none"> • Cam lock • Tee handles • Tee handles with key lock • Electronic keypad door lock • Pegboard back • Sloping top (see table on page 22) |
| MWC-A4-3024 | 30" (762mm) | 24" (609.6mm) | 13" (330.2mm) | 1 | |
| MWC-A4-3030 | 30" (762mm) | 30" (762mm) | 13" (330.2mm) | 2 | |
| MWC-A4-3036 | 30" (762mm) | 36" (914.4mm) | 13" (330.2mm) | 2 | |
| MWC-A4-3048 | 30" (762mm) | 48" (1219.2mm) | 13" (330.2mm) | 3 | |
| MWC-A4-3618 | 36" (914.4mm) | 18" (457.2mm) | 13" (330.2mm) | 1 | |
| MWC-A4-3624 | 36" (914.4mm) | 24" (609.6mm) | 13" (330.2mm) | 1 | |
| MWC-A4-3630 | 36" (914.4mm) | 30" (762mm) | 13" (330.2mm) | 2 | |
| MWC-A4-3636 | 36" (914.4mm) | 36" (914.4mm) | 13" (330.2mm) | 2 | |
| MWC-A4-3648 | 36" (914.4mm) | 48" (1219.2mm) | 13" (330.2mm) | 3 | |
| MWC-A4-4218 | 42" (1066.8mm) | 18" (457.2mm) | 13" (330.2mm) | 1 | |
| MWC-A4-4224 | 42" (1066.8mm) | 24" (609.6mm) | 13" (330.2mm) | 1 | |
| MWC-A4-4230 | 42" (1066.8mm) | 30" (762mm) | 13" (330.2mm) | 2 | |
| MWC-A4-4236 | 42" (1066.8mm) | 36" (914.4mm) | 13" (330.2mm) | 2 | |
| MWC-A4-4248 | 42" (1066.8mm) | 48" (1219.2mm) | 13" (330.2mm) | 3 | |
| MWC-A4-4818 | 48" (1219.2mm) | 18" (457.2mm) | 13" (330.2mm) | 1 | |
| MWC-A4-4824 | 48" (1219.2mm) | 24" (609.6mm) | 13" (330.2mm) | 1 | |
| MWC-A4-4830 | 48" (1219.2mm) | 30" (762mm) | 13" (330.2mm) | 2 | |
| MWC-A4-4836 | 48" (1219.2mm) | 36" (914.4mm) | 13" (330.2mm) | 2 | |
| MWC-A4-4848 | 48" (1219.2mm) | 48" (1219.2mm) | 13" (330.2mm) | 3 | |

Additional sizes available for specific requirements; please contact us for further assistance

Additional shelving available for purchase



Wall Cabinets No Doors

MWC-A5-3630

| Model # | Width | Height | Depth | Shelves | Optional Features |
|-------------|----------------|----------------|---------------|---------|-----------------------------------------------------------------------------------------------------------------|
| MWC-A5-3018 | 30" (762mm) | 18" (457.2mm) | 13" (330.2mm) | 1 | <ul style="list-style-type: none"> • Pegboard back • Sloping top (see table on page 22) |
| MWC-A5-3024 | 30" (762mm) | 24" (609.6mm) | 13" (330.2mm) | 1 | |
| MWC-A5-3030 | 30" (762mm) | 30" (762mm) | 13" (330.2mm) | 2 | |
| MWC-A5-3036 | 30" (762mm) | 36" (914.4mm) | 13" (330.2mm) | 2 | |
| MWC-A5-3048 | 30" (762mm) | 48" (1219.2mm) | 13" (330.2mm) | 3 | |
| MWC-A5-3618 | 36" (914.4mm) | 18" (457.2mm) | 13" (330.2mm) | 1 | |
| MWC-A5-3624 | 36" (914.4mm) | 24" (609.6mm) | 13" (330.2mm) | 1 | |
| MWC-A5-3630 | 36" (914.4mm) | 30" (762mm) | 13" (330.2mm) | 2 | |
| MWC-A5-3636 | 36" (914.4mm) | 36" (914.4mm) | 13" (330.2mm) | 2 | |
| MWC-A5-3648 | 36" (914.4mm) | 48" (1219.2mm) | 13" (330.2mm) | 3 | |
| MWC-A5-4218 | 42" (1066.8mm) | 18" (457.2mm) | 13" (330.2mm) | 1 | |
| MWC-A5-4224 | 42" (1066.8mm) | 24" (609.6mm) | 13" (330.2mm) | 1 | |
| MWC-A5-4230 | 42" (1066.8mm) | 30" (762mm) | 13" (330.2mm) | 2 | |
| MWC-A5-4236 | 42" (1066.8mm) | 36" (914.4mm) | 13" (330.2mm) | 2 | |
| MWC-A5-4248 | 42" (1066.8mm) | 48" (1219.2mm) | 13" (330.2mm) | 3 | |
| MWC-A5-4818 | 48" (1219.2mm) | 18" (457.2mm) | 13" (330.2mm) | 1 | |
| MWC-A5-4824 | 48" (1219.2mm) | 24" (609.6mm) | 13" (330.2mm) | 1 | |
| MWC-A5-4830 | 48" (1219.2mm) | 30" (762mm) | 13" (330.2mm) | 2 | |
| MWC-A5-4836 | 48" (1219.2mm) | 36" (914.4mm) | 13" (330.2mm) | 2 | |
| MWC-A5-4848 | 48" (1219.2mm) | 48" (1219.2mm) | 13" (330.2mm) | 3 | |

Note: Additional sizes available for specific requirements; please contact us for further assistance

Note: Additional shelving available for purchase

Customer needs are our first priority.

For questions or to place an order, contact our customer service department at **618-476-3550** or **877-828-9975**, or by email at sales@macmedical.com.



Wall Cabinets Dual Sliding Glass Doors

MWC-A6-3630

| Model # | Width | Height | Depth | Shelves | Optional Features |
|-------------|----------------|----------------|---------------|---------|-------------------------------------------------------------------------------------------------------------------------------------|
| MWC-A6-3018 | 30" (762mm) | 18" (457.2mm) | 13" (330.2mm) | 1 | <ul style="list-style-type: none"> • Cam lock • Pegboard back • Sloping top (see table on page 22) |
| MWC-A6-3024 | 30" (762mm) | 24" (609.6mm) | 13" (330.2mm) | 1 | |
| MWC-A6-3030 | 30" (762mm) | 30" (762mm) | 13" (330.2mm) | 2 | |
| MWC-A6-3036 | 30" (762mm) | 36" (914.4mm) | 13" (330.2mm) | 2 | |
| MWC-A6-3048 | 30" (762mm) | 48" (1219.2mm) | 13" (330.2mm) | 3 | |
| MWC-A6-3618 | 36" (914.4mm) | 18" (457.2mm) | 13" (330.2mm) | 1 | |
| MWC-A6-3624 | 36" (914.4mm) | 24" (609.6mm) | 13" (330.2mm) | 1 | |
| MWC-A6-3630 | 36" (914.4mm) | 30" (762mm) | 13" (330.2mm) | 2 | |
| MWC-A6-3636 | 36" (914.4mm) | 36" (914.4mm) | 13" (330.2mm) | 2 | |
| MWC-A6-3648 | 36" (914.4mm) | 48" (1219.2mm) | 13" (330.2mm) | 3 | |
| MWC-A6-4218 | 42" (1066.8mm) | 18" (457.2mm) | 13" (330.2mm) | 1 | |
| MWC-A6-4224 | 42" (1066.8mm) | 24" (609.6mm) | 13" (330.2mm) | 1 | |
| MWC-A6-4230 | 42" (1066.8mm) | 30" (762mm) | 13" (330.2mm) | 2 | |
| MWC-A6-4236 | 42" (1066.8mm) | 36" (914.4mm) | 13" (330.2mm) | 2 | |
| MWC-A6-4248 | 42" (1066.8mm) | 48" (1219.2mm) | 13" (330.2mm) | 3 | |
| MWC-A6-4818 | 48" (1219.2mm) | 18" (457.2mm) | 13" (330.2mm) | 1 | |
| MWC-A6-4824 | 48" (1219.2mm) | 24" (609.6mm) | 13" (330.2mm) | 1 | |
| MWC-A6-4830 | 48" (1219.2mm) | 30" (762mm) | 13" (330.2mm) | 2 | |
| MWC-A6-4836 | 48" (1219.2mm) | 36" (914.4mm) | 13" (330.2mm) | 2 | |
| MWC-A6-4848 | 48" (1219.2mm) | 48" (1219.2mm) | 13" (330.2mm) | 3 | |

Note: Additional sizes available for specific requirements; please contact us for further assistance

Note: Additional shelving available for purchase

Ask about these custom features for our Wall Cabinets:

- Pass through construction with optional interlock
- Lead lined construction
- Divider shelves
- Cabinet fillers
- LED lighting (installation required)



Base Cabinets

Single Solid Door

MBC-A1-24

| Model # | Width | Height | Depth | Shelves | Optional Features |
|-----------|---------------|-----------------|---------------|---------|------------------------------------------------------------------------------------------------------------------------------------------------------------------------------------------------------------------------------|
| MBC-A1-15 | 15" (381mm) | 34.5" (876.3mm) | 22" (558.8mm) | 1 | <ul style="list-style-type: none"> • Cam lock • Tee handle • Tee handle with key lock • Electronic keypad door lock • Right or left hinge • Variable height base |
| MBC-A1-18 | 18" (457.2mm) | 34.5" (876.3mm) | 22" (558.8mm) | 1 | |
| MBC-A1-21 | 21" (533.4mm) | 34.5" (876.3mm) | 22" (558.8mm) | 1 | |
| MBC-A1-24 | 24" (609.6mm) | 34.5" (876.3mm) | 22" (558.8mm) | 1 | |

Note: Additional sizes available for specific requirements; please contact us for further assistance
Note: Additional shelving available for purchase



Base Cabinets

Single Solid Door, Single Drawer

MBC-A2-24

| Model # | Width | Height | Depth | Shelves | Optional Features |
|-----------|---------------|-----------------|---------------|---------|------------------------------------------------------------------------------------------------------------------------------------------------------------------------------------------------------------------------------|
| MBC-A2-15 | 15" (381mm) | 34.5" (876.3mm) | 22" (558.8mm) | 1 | <ul style="list-style-type: none"> • Cam lock • Tee handle • Tee handle with key lock • Electronic keypad door lock • Right or left hinge • Variable height base |
| MBC-A2-18 | 18" (457.2mm) | 34.5" (876.3mm) | 22" (558.8mm) | 1 | |
| MBC-A2-21 | 21" (533.4mm) | 34.5" (876.3mm) | 22" (558.8mm) | 1 | |
| MBC-A2-24 | 24" (609.6mm) | 34.5" (876.3mm) | 22" (558.8mm) | 1 | |

Note: Additional sizes available for specific requirements; please contact us for further assistance
Note: Additional shelving available for purchase



Base Cabinets

Single Solid Door, Sink Cabinet

MBC-A3-24

| Model # | Width | Height | Depth | Shelves | Optional Features |
|-----------|---------------|-----------------|---------------|---------|------------------------------------------------------------------------------------------------------------------------------------------------------------------------------------------------------------------------------|
| MBC-A3-15 | 15" (381mm) | 34.5" (876.3mm) | 22" (558.8mm) | 0 | <ul style="list-style-type: none"> • Cam lock • Tee handle • Tee handle with key lock • Electronic keypad door lock • Right or left hinge • Variable height base |
| MBC-A3-18 | 18" (457.2mm) | 34.5" (876.3mm) | 22" (558.8mm) | 0 | |
| MBC-A3-21 | 21" (533.4mm) | 34.5" (876.3mm) | 22" (558.8mm) | 0 | |
| MBC-A3-24 | 24" (609.6mm) | 34.5" (876.3mm) | 22" (558.8mm) | 0 | |

Note: Additional sizes available for specific requirements; please contact us for further assistance



Base Cabinets

4 Drawers

MBC-A4-24

| Model # | Width | Height | Depth | Shelves | Optional Features |
|-----------|---------------|-----------------|---------------|---------|----------------------------------------------------------------------------------------------|
| MBC-A4-15 | 15" (381mm) | 34.5" (876.3mm) | 22" (558.8mm) | 0 | <ul style="list-style-type: none"> • Cam lock • Variable height base |
| MBC-A4-18 | 18" (457.2mm) | 34.5" (876.3mm) | 22" (558.8mm) | 0 | |
| MBC-A4-21 | 21" (533.4mm) | 34.5" (876.3mm) | 22" (558.8mm) | 0 | |
| MBC-A4-24 | 24" (609.6mm) | 34.5" (876.3mm) | 22" (558.8mm) | 0 | |

Note: Additional sizes available for specific requirements; please contact us for further assistance



Base Cabinets 3 Drawers

MBC-A5-24

| Model # | Width | Height | Depth | Shelves | Optional Features |
|-----------|---------------|-----------------|---------------|---------|----------------------------------------------------------------------------------------------|
| MBC-A5-18 | 18" (457.2mm) | 34.5" (876.3mm) | 22" (558.8mm) | 0 | <ul style="list-style-type: none"> • Cam lock • Variable height base |
| MBC-A5-21 | 21" (533.4mm) | 34.5" (876.3mm) | 22" (558.8mm) | 0 | |
| MBC-A5-24 | 24" (609.6mm) | 34.5" (876.3mm) | 22" (558.8mm) | 0 | |

Note: Additional sizes available for specific requirements; please contact us for further assistance



Base Cabinets No Doors

MBC-A6-24

| Model # | Width | Height | Depth | Shelves | Optional Features |
|-----------|----------------|-----------------|---------------|---------|--------------------------------------------------------------------------|
| MBC-A6-15 | 15" (381mm) | 34.5" (876.3mm) | 22" (558.8mm) | 2 | <ul style="list-style-type: none"> • Variable height base |
| MBC-A6-18 | 18" (457.2mm) | 34.5" (876.3mm) | 22" (558.8mm) | 2 | |
| MBC-A6-21 | 21" (533.4mm) | 34.5" (876.3mm) | 22" (558.8mm) | 2 | |
| MBC-A6-24 | 24" (609.6mm) | 34.5" (876.3mm) | 22" (558.8mm) | 2 | |
| MBC-A6-30 | 30" (762mm) | 34.5" (876.3mm) | 22" (558.8mm) | 2 | |
| MBC-A6-36 | 36" (914.4mm) | 34.5" (876.3mm) | 22" (558.8mm) | 2 | |
| MBC-A6-42 | 42" (1066.8mm) | 34.5" (876.3mm) | 22" (558.8mm) | 2 | |
| MBC-A6-48 | 48" (1219.2mm) | 34.5" (876.3mm) | 22" (558.8mm) | 2 | |

Note: Additional sizes available for specific requirements; please contact us for further assistance

Note: Additional shelving available for purchase



Base Cabinets

Dual Solid Doors

MBC-A7-36

| Model # | Width | Height | Depth | Shelves | Optional Features |
|-----------|----------------|-----------------|---------------|---------|-------------------------------------------------------------------------------------------------------------------------------------------------------------------------------------------------|
| MBC-A7-30 | 30" (762mm) | 34.5" (876.3mm) | 22" (558.8mm) | 1 | <ul style="list-style-type: none"> • Cam lock • Tee handles • Tee handles with key lock • Electronic keypad door lock • Variable height base |
| MBC-A7-36 | 36" (914.4mm) | 34.5" (876.3mm) | 22" (558.8mm) | 1 | |
| MBC-A7-42 | 42" (1066.8mm) | 34.5" (876.3mm) | 22" (558.8mm) | 1 | |
| MBC-A7-48 | 48" (1219.2mm) | 34.5" (876.3mm) | 22" (558.8mm) | 1 | |

Note: Additional sizes available for specific requirements; please contact us for further assistance

Note: Additional shelving available for purchase



Base Cabinets

Dual Solid Doors, Dual Drawers

MBC-A8-36

| Model # | Width | Height | Depth | Shelves | Optional Features |
|-----------|----------------|-----------------|---------------|---------|-------------------------------------------------------------------------------------------------------------------------------------------------------------------------------------------------|
| MBC-A8-30 | 30" (762mm) | 34.5" (876.3mm) | 22" (558.8mm) | 1 | <ul style="list-style-type: none"> • Cam lock • Tee handles • Tee handles with key lock • Electronic keypad door lock • Variable height base |
| MBC-A8-36 | 36" (914.4mm) | 34.5" (876.3mm) | 22" (558.8mm) | 1 | |
| MBC-A8-42 | 42" (1066.8mm) | 34.5" (876.3mm) | 22" (558.8mm) | 1 | |
| MBC-A8-48 | 48" (1219.2mm) | 34.5" (876.3mm) | 22" (558.8mm) | 1 | |

Note: Additional sizes available for specific requirements; please contact us for further assistance

Note: Additional shelving available for purchase

Customer needs are our first priority.

For questions or to place an order, contact our customer service department at **618-476-3550** or **877-828-9975**, or by email at sales@macmedical.com.



Base Cabinets

Dual Solid Doors, Sink Cabinet

MBC-A9-36

| Model # | Width | Height | Depth | Shelves | Optional Features |
|-----------|----------------|-----------------|---------------|---------|-------------------------------------------------------------------------------------------------------------------------------------------------------------------------------------------------|
| MBC-A9-30 | 30" (762mm) | 34.5" (876.3mm) | 22" (558.8mm) | 0 | <ul style="list-style-type: none"> • Cam lock • Tee handles • Tee handles with key lock • Electronic keypad door lock • Variable height base |
| MBC-A9-36 | 36" (914.4mm) | 34.5" (876.3mm) | 22" (558.8mm) | 0 | |
| MBC-A9-42 | 42" (1066.8mm) | 34.5" (876.3mm) | 22" (558.8mm) | 0 | |
| MBC-A9-48 | 48" (1219.2mm) | 34.5" (876.3mm) | 22" (558.8mm) | 0 | |

Note: Additional sizes available for specific requirements; please contact us for further assistance



Base Cabinets

Dual Solid Doors, Single Drawer

MBC-A10-36

| Model # | Width | Height | Depth | Shelves | Optional Features |
|------------|----------------|-----------------|---------------|---------|-------------------------------------------------------------------------------------------------------------------------------------------------------------------------------------------------|
| MBC-A10-30 | 30" (762mm) | 34.5" (876.3mm) | 22" (558.8mm) | 1 | <ul style="list-style-type: none"> • Cam lock • Tee handles • Tee handles with key lock • Electronic keypad door lock • Variable height base |
| MBC-A10-36 | 36" (914.4mm) | 34.5" (876.3mm) | 22" (558.8mm) | 1 | |
| MBC-A10-42 | 42" (1066.8mm) | 34.5" (876.3mm) | 22" (558.8mm) | 1 | |
| MBC-A10-48 | 48" (1219.2mm) | 34.5" (876.3mm) | 22" (558.8mm) | 1 | |

Note: Additional sizes available for specific requirements; please contact us for further assistance

Note: Additional shelving available for purchase

Ask about these custom features for our Base Cabinets:

- Pull out writing surface
- Pull out drawers
- Drawer dividers
- Pull out baskets
- Vented doors
- Divider shelves
- Cabinet fillers
- Trim kits
- LED lighting (installation required)



High Cabinets Single Solid Door

MHC-A1-2418

| Model # | Width | Height | Depth | Shelves | Optional Features |
|-------------|---------------|----------------|---------------|---------|--------------------------------------------------------------------------------------------------------------------------------------------------------------------------------------------------------------------------------------------------------------------------------------------------------------------------------------|
| MHC-A1-1818 | 18" (457.2mm) | 84" (2133.6mm) | 18" (457.2mm) | 5 | <ul style="list-style-type: none"> • Recessed (80" height) • Cam lock • Tee handle • Tee handle with key lock • Electronic keypad door lock • Right or left hinge • Pegboard back • Variable height base • Sloping top (see table on page 22) |
| MHC-A1-1824 | 18" (457.2mm) | 84" (2133.6mm) | 24" (609.6mm) | 5 | |
| MHC-A1-2418 | 24" (609.6mm) | 84" (2133.6mm) | 18" (457.2mm) | 5 | |
| MHC-A1-2424 | 24" (609.6mm) | 84" (2133.6mm) | 24" (609.6mm) | 5 | |

Note: Additional sizes available for specific requirements; please contact us for further assistance
 Note: Additional shelving available for purchase



High Cabinets Single Glass Door

MHC-A2-2418

| Model # | Width | Height | Depth | Shelves | Optional Features |
|-------------|---------------|----------------|---------------|---------|--------------------------------------------------------------------------------------------------------------------------------------------------------------------------------------------------------------------------------------------------------------------------------------------------------------------------------------|
| MHC-A2-1818 | 18" (457.2mm) | 84" (2133.6mm) | 18" (457.2mm) | 5 | <ul style="list-style-type: none"> • Recessed (80" height) • Cam lock • Tee handle • Tee handle with key lock • Electronic keypad door lock • Right or left hinge • Pegboard back • Variable height base • Sloping top (see table on page 22) |
| MHC-A2-1824 | 18" (457.2mm) | 84" (2133.6mm) | 24" (609.6mm) | 5 | |
| MHC-A2-2418 | 24" (609.6mm) | 84" (2133.6mm) | 18" (457.2mm) | 5 | |
| MHC-A2-2424 | 24" (609.6mm) | 84" (2133.6mm) | 24" (609.6mm) | 5 | |

Note: Additional sizes available for specific requirements; please contact us for further assistance
 Note: Additional shelving available for purchase



High Cabinets Dual Solid Doors

MHC-A3-3618

| Model # | Width | Height | Depth | Shelves | Optional Features |
|-------------|----------------|----------------|---------------|---------|---------------------------------------------------------------------------------------------------------------------------------------------------------------------------------------------------------------------------------------------------------------------------------------------------------|
| MHC-A3-3018 | 30" (762mm) | 84" (2133.6mm) | 18" (457.2mm) | 5 | <ul style="list-style-type: none"> • Recessed (80" height) • Cam lock • Tee handles • Tee handles with key lock • Electronic keypad door lock • Pegboard back • Variable height base • Sloping top (see table on page 22) |
| MHC-A3-3024 | 30" (762mm) | 84" (2133.6mm) | 24" (609.6mm) | 5 | |
| MHC-A3-3618 | 36" (914.4mm) | 84" (2133.6mm) | 18" (457.2mm) | 5 | |
| MHC-A3-3624 | 36" (914.4mm) | 84" (2133.6mm) | 24" (609.6mm) | 5 | |
| MHC-A3-4218 | 42" (1066.8mm) | 84" (2133.6mm) | 18" (457.2mm) | 5 | |
| MHC-A3-4224 | 42" (1066.8mm) | 84" (2133.6mm) | 24" (609.6mm) | 5 | |
| MHC-A3-4818 | 48" (1219.2mm) | 84" (2133.6mm) | 18" (457.2mm) | 5 | |
| MHC-A3-4824 | 48" (1219.2mm) | 84" (2133.6mm) | 24" (609.6mm) | 5 | |

Note: Additional sizes available for specific requirements; please contact us for further assistance

Note: Additional shelving available for purchase



High Cabinets Dual Glass Doors

MHC-A4-3618

| Model # | Width | Height | Depth | Shelves | Optional Features |
|-------------|----------------|----------------|---------------|---------|---------------------------------------------------------------------------------------------------------------------------------------------------------------------------------------------------------------------------------------------------------------------------------------------------------|
| MHC-A4-3018 | 30" (762mm) | 84" (2133.6mm) | 18" (457.2mm) | 5 | <ul style="list-style-type: none"> • Recessed (80" height) • Cam lock • Tee handles • Tee handles with key lock • Electronic keypad door lock • Pegboard back • Variable height base • Sloping top (see table on page 22) |
| MHC-A4-3024 | 30" (762mm) | 84" (2133.6mm) | 24" (609.6mm) | 5 | |
| MHC-A4-3618 | 36" (914.4mm) | 84" (2133.6mm) | 18" (457.2mm) | 5 | |
| MHC-A4-3624 | 36" (914.4mm) | 84" (2133.6mm) | 24" (609.6mm) | 5 | |
| MHC-A4-4218 | 42" (1066.8mm) | 84" (2133.6mm) | 18" (457.2mm) | 5 | |
| MHC-A4-4224 | 42" (1066.8mm) | 84" (2133.6mm) | 24" (609.6mm) | 5 | |
| MHC-A4-4818 | 48" (1219.2mm) | 84" (2133.6mm) | 18" (457.2mm) | 5 | |
| MHC-A4-4824 | 48" (1219.2mm) | 84" (2133.6mm) | 24" (609.6mm) | 5 | |

Note: Additional sizes available for specific requirements; please contact us for further assistance

Note: Additional shelving available for purchase



High Cabinets

Dual Sliding Solid Doors

MHC-A5-3618

| Model # | Width | Height | Depth | Shelves | Optional Features |
|-------------|----------------|----------------|---------------|---------|------------------------------------------------------------------------------------------------------------------------------------------------------------------------------------------------------|
| MHC-A5-3018 | 30" (762mm) | 84" (2133.6mm) | 18" (457.2mm) | 5 | <ul style="list-style-type: none"> • Recessed (80" height) • Cam lock • Pegboard back • Variable height base • Sloping top (see table on page 22) |
| MHC-A5-3024 | 30" (762mm) | 84" (2133.6mm) | 24" (609.6mm) | 5 | |
| MHC-A5-3618 | 36" (914.4mm) | 84" (2133.6mm) | 18" (457.2mm) | 5 | |
| MHC-A5-3624 | 36" (914.4mm) | 84" (2133.6mm) | 24" (609.6mm) | 5 | |
| MHC-A5-4218 | 42" (1066.8mm) | 84" (2133.6mm) | 18" (457.2mm) | 5 | |
| MHC-A5-4224 | 42" (1066.8mm) | 84" (2133.6mm) | 24" (609.6mm) | 5 | |
| MHC-A5-4818 | 48" (1219.2mm) | 84" (2133.6mm) | 18" (457.2mm) | 5 | |
| MHC-A5-4824 | 48" (1219.2mm) | 84" (2133.6mm) | 24" (609.6mm) | 5 | |

Note: Additional sizes available for specific requirements; please contact us for further assistance

Note: Additional shelving available for purchase



High Cabinets

Dual Sliding Glass Doors

MHC-A6-3618

| Model # | Width | Height | Depth | Shelves | Optional Features |
|-------------|----------------|----------------|---------------|---------|------------------------------------------------------------------------------------------------------------------------------------------------------------------------------------------------------|
| MHC-A6-3018 | 30" (762mm) | 84" (2133.6mm) | 18" (457.2mm) | 5 | <ul style="list-style-type: none"> • Recessed (80" height) • Cam lock • Pegboard back • Variable height base • Sloping top (see table on page 22) |
| MHC-A6-3024 | 30" (762mm) | 84" (2133.6mm) | 24" (609.6mm) | 5 | |
| MHC-A6-3618 | 36" (914.4mm) | 84" (2133.6mm) | 18" (457.2mm) | 5 | |
| MHC-A6-3624 | 36" (914.4mm) | 84" (2133.6mm) | 24" (609.6mm) | 5 | |
| MHC-A6-4218 | 42" (1066.8mm) | 84" (2133.6mm) | 18" (457.2mm) | 5 | |
| MHC-A6-4224 | 42" (1066.8mm) | 84" (2133.6mm) | 24" (609.6mm) | 5 | |
| MHC-A6-4818 | 48" (1219.2mm) | 84" (2133.6mm) | 18" (457.2mm) | 5 | |
| MHC-A6-4824 | 48" (1219.2mm) | 84" (2133.6mm) | 24" (609.6mm) | 5 | |

Note: Additional sizes available for specific requirements; please contact us for further assistance

Note: Additional shelving available for purchase

Ask about these custom features for our High Cabinets:

- Pass through construction with optional interlock
- Lead lined construction
- Divider shelves
- Pull out drawers
- Pull out baskets
- Casters (adds 2 1/2" to height)
- Cabinet fillers
- Trim kits
- LED lighting (installation required)

Magnetic door catches
with a quiet close!



Operating Room Cabinets

MAC Medical's full line of stainless steel Operating Room Cabinets can be assembled and configured in a number of ways to create a bank of cabinets to fit your facility needs. Standard models are recessed with several optional features to choose from.

STANDARD FEATURES

- Magnetic door catches with a quiet close
- Seamless front face on all cabinets
- Revit® files & spec sheets available
- Recessed
- Fully welded construction
- Type 300 series stainless steel
- Stainless steel shelves (excludes Table Accessory Cabinets & Desk Cabinets, shelves adjust in 1 ½" increments)
- ¾" tempered glass (where applicable)



Table Accessory Cabinets

MTA-36

| Model # | Width | Height | Depth | Shelves | Optional Features |
|-------------------------------------------------------------------------------------------------------------------------------------------------------------|----------------|--------------|---------------|---------|-----------------------------------------------------------------------------------------------------------------------------------------------------------------------------------------------------------------------------------------------------------------|
| MTA-36 | 36" (914.4mm) | 60" (1524mm) | 18" (457.2mm) | 0 | <ul style="list-style-type: none"> • Glass doors • Tee handles with key lock • Electronic keypad door lock with standard handles • 12" high base (see table on page 21) • Sloping top (see table on page 22) |
| MTA-48 | 48" (1219.2mm) | 60" (1524mm) | 18" (457.2mm) | 0 | |
| Standard features include: Recessed unit, dual solid doors, pegboard back & sides (with 1/4" diameter holes 1" center to center), and tee handles | | | | | |

Note: Additional sizes available for specific requirements; please contact us for further assistance



Equipment Supply Cabinets

MES-36

| Model # | Width | Height | Depth | Shelves | Optional Features |
|-------------------------------------------------------------------------------------------------------------------------------------------------------|----------------|--------------|---------------|---------|---------------------------------------------------------------------------------------------------------------------------------------------------------------------------------------------------------------------------------------------------------------------------------|
| MES-36 | 36" (914.4mm) | 60" (1524mm) | 18" (457.2mm) | 3 | <ul style="list-style-type: none"> • Solid stainless steel doors • Tee handles with key lock • Electronic keypad door lock with standard handles • 12" high base (see table on page 21) • Sloping top (see table on page 22) |
| MES-48 | 48" (1219.2mm) | 60" (1524mm) | 18" (457.2mm) | 3 | |
| Standard features include: Recessed unit, dual glass doors with 3/16" tempered glass, 3 adjustable stainless steel shelves, and tee handles | | | | | |

Note: Additional sizes available for specific requirements; please contact us for further assistance

Note: Additional shelving available for purchase

Customer needs are our first priority.

For questions or to place an order, contact our customer service department at **618-476-3550** or **877-828-9975**, or by email at sales@macmedical.com.



Desk Cabinets

MDC-24

| Model # | Width | Height | Depth | Shelves | Optional Features |
|------------------------------------------------------------------------------------------------------------------------------------------|---------------|--------------|---------------|---------|----------------------------------------------------------------------------------------------------------------------------------------|
| MDC-24 | 24" (609.6mm) | 60" (1524mm) | 18" (457.2mm) | 0 | <ul style="list-style-type: none"> • 12" high base (see table on page 21) • Sloping top (see table on page 22) |
| Standard features include: Recessed unit, sloped writing surface, dry erase board, and 4 drawers with 4" standard pull handles | | | | | |

Note: Additional sizes available for specific requirements; please contact us for further assistance



Miscellaneous Supply Cabinets

MMS-24

| Model # | Width | Height | Depth | Shelves | Optional Features |
|------------------------------------------------------------------------------------------------------------------------------------------------------|---------------|--------------|---------------|---------|-----------------------------------------------------------------------------------------------------------------------------------------------------------------------------------------------------------------------------------------------------------------------------------------------------------------------|
| MMS-24 | 24" (609.6mm) | 60" (1524mm) | 18" (457.2mm) | 3 | <ul style="list-style-type: none"> • Solid stainless steel door • Tee handle with key lock • Electronic keypad door lock with a 4" standard pull handle • Right or left hinge • 12" high base (see table on page 21) • Sloping top (see table on page 22) |
| Standard features include: Recessed unit, single glass door with 3/8" tempered glass, 3 adjustable stainless steel shelves, and tee handle | | | | | |

Note: Additional sizes available for specific requirements; please contact us for further assistance

Note: Additional shelving available for purchase

Ask out about these custom features for our Operating Room Cabinets:

- Pass through construction with optional interlock
- Lead lined construction
- Divider shelves
- Pull out drawers
- Pull out baskets
- Endoscope hooks
- Catheter slides with hooks
- Pull out catheter box
- Cabinet fillers
- Trim kits
- LED lighting (installation required)

Operating Room Bases - 12" High

| Model # | Width | Height | Depth |
|-----------|----------------|---------------|---------------|
| MORB-2412 | 24" (609.6mm) | 12" (304.8mm) | 18" (457.2mm) |
| MORB-3612 | 36" (914.4mm) | 12" (304.8mm) | 18" (457.2mm) |
| MORB-4812 | 48" (1219.2mm) | 12" (304.8mm) | 18" (457.2mm) |

Note: Additional sizes available for specific requirements; please contact us for further assistance

STANDARD FEATURES

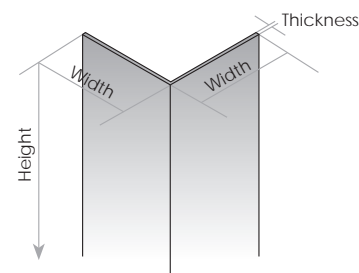
- Type 300 series stainless steel

Corner Guards

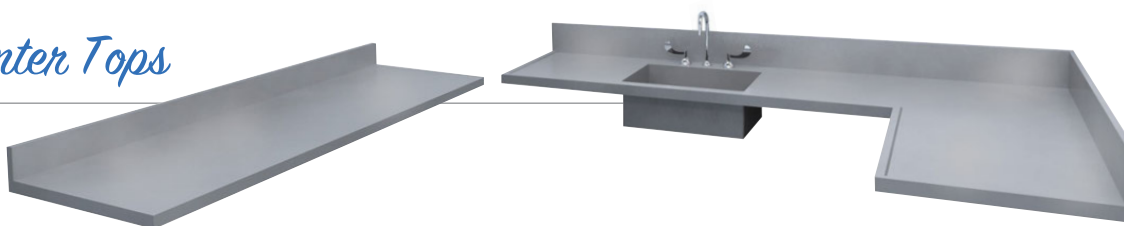
| Model # | Width | Height | Thickness |
|----------|---------------|----------------|---------------|
| MCG-1548 | 1.5" (38.1mm) | 48" (1219.2mm) | 1/16" (1.6mm) |
| MCG-1596 | 1.5" (38.1mm) | 96" (2438.4mm) | 1/16" (1.6mm) |
| MCG-2548 | 2.5" (63.5mm) | 48" (1219.2mm) | 1/16" (1.6mm) |
| MCG-2596 | 2.5" (63.5mm) | 96" (2438.4mm) | 1/16" (1.6mm) |
| MCG-3548 | 3.5" (88.9mm) | 48" (1219.2mm) | 1/16" (1.6mm) |
| MCG-3596 | 3.5" (88.9mm) | 96" (2438.4mm) | 1/16" (1.6mm) |

Note: Additional sizes available for specific requirements; please contact us for further assistance

Note: Contact adhesive not included



Counter Tops



Counter tops are fabricated from 16 gauge (.060") 300 series stainless steel. The underside is reinforced with channels and coated with sound deadening mastic, sink included. Marine edges are provided for counter tops containing sinks. Sinks are fabricated (not drawn) from 16 gauge (.06") 300 series stainless steel with a 5/8" cove corner, laser etched gallon markings, positive pitch towards drain, and are integrally welded to top. A 4" backsplash is standard with optional side splashes. Please consult MAC Medical for custom sizes meeting any and all architectural requirements. Counter tops are fabricated in one piece where design and materials permit.

Note: All counter tops are sold separately and installed by others along with any plumbing fixtures

Sloping Tops



MST-4818

| Model # | Width | Height | Depth |
|----------|----------------|-------------------|---------------|
| MST-1813 | 18" (457.2mm) | 6 3/4" (171.4mm) | 13" (330.2mm) |
| MST-2413 | 24" (609.6mm) | 6 3/4" (171.4mm) | 13" (330.2mm) |
| MST-3013 | 30" (762mm) | 6 3/4" (171.4mm) | 13" (330.2mm) |
| MST-3613 | 36" (914.4mm) | 6 3/4" (171.4mm) | 13" (330.2mm) |
| MST-4213 | 42" (1066.8mm) | 6 3/4" (171.4mm) | 13" (330.2mm) |
| MST-4813 | 48" (1219.2mm) | 6 3/4" (171.4mm) | 13" (330.2mm) |
| MST-1818 | 18" (457.2mm) | 9" (228.6mm) | 18" (457.2mm) |
| MST-2418 | 24" (609.6mm) | 9" (228.6mm) | 18" (457.2mm) |
| MST-3018 | 30" (762mm) | 9" (228.6mm) | 18" (457.2mm) |
| MST-3618 | 36" (914.4mm) | 9" (228.6mm) | 18" (457.2mm) |
| MST-4218 | 42" (1066.8mm) | 9" (228.6mm) | 18" (457.2mm) |
| MST-4818 | 48" (1219.2mm) | 9" (228.6mm) | 18" (457.2mm) |
| MST-1824 | 18" (457.2mm) | 11 7/8" (301.6mm) | 24" (609.6mm) |
| MST-2424 | 24" (609.6mm) | 11 7/8" (301.6mm) | 24" (609.6mm) |
| MST-3024 | 30" (762mm) | 11 7/8" (301.6mm) | 24" (609.6mm) |
| MST-3624 | 36" (914.4mm) | 11 7/8" (301.6mm) | 24" (609.6mm) |
| MST-4224 | 42" (1066.8mm) | 11 7/8" (301.6mm) | 24" (609.6mm) |
| MST-4824 | 48" (1219.2mm) | 11 7/8" (301.6mm) | 24" (609.6mm) |

Note: Additional sizes available for specific requirements; please contact us for further assistance

Customer needs are our first priority.

For questions or to place an order, contact our customer service department at **618-476-3550** or **877-828-9975**, or by email at sales@macmedical.com.

STANDARD FEATURES

- Type 300 series stainless steel
- 25° slope angle



Wall Shelves



| Model # | Width | Depth | Brackets |
|----------|----------------|---------------|----------|
| MWS-2408 | 24" (609.6mm) | 8" (203.2mm) | 2 |
| MWS-3608 | 36" (914.4mm) | 8" (203.2mm) | 2 |
| MWS-4808 | 48" (1219.2mm) | 8" (203.2mm) | 2 |
| MWS-6008 | 60" (1524mm) | 8" (203.2mm) | 3 |
| MWS-7208 | 72" (1828.8mm) | 8" (203.2mm) | 3 |
| MWS-8408 | 84" (2133.6mm) | 8" (203.2mm) | 4 |
| MWS-9608 | 96" (2438.4mm) | 8" (203.2mm) | 4 |
| MWS-2412 | 24" (609.6mm) | 12" (304.8mm) | 2 |
| MWS-3612 | 36" (914.4mm) | 12" (304.8mm) | 2 |
| MWS-4812 | 48" (1219.2mm) | 12" (304.8mm) | 2 |
| MWS-6012 | 60" (1524mm) | 12" (304.8mm) | 3 |
| MWS-7212 | 72" (1828.8mm) | 12" (304.8mm) | 3 |
| MWS-8412 | 84" (2133.6mm) | 12" (304.8mm) | 4 |
| MWS-9612 | 96" (2438.4mm) | 12" (304.8mm) | 4 |
| MWS-2416 | 24" (609.6mm) | 16" (406.4mm) | 2 |
| MWS-3616 | 36" (914.4mm) | 16" (406.4mm) | 2 |
| MWS-4816 | 48" (1219.2mm) | 16" (406.4mm) | 2 |
| MWS-6016 | 60" (1524mm) | 16" (406.4mm) | 3 |
| MWS-7216 | 72" (1828.8mm) | 16" (406.4mm) | 3 |
| MWS-8416 | 84" (2133.6mm) | 16" (406.4mm) | 4 |
| MWS-9616 | 96" (2438.4mm) | 16" (406.4mm) | 4 |

Note: Additional sizes available for specific requirements; please contact us for further assistance

STANDARD FEATURES

- Type 300 series stainless steel
- 1" lip on back
- Pre-punched for easy wall mounting (mounting hardware not included)



Company-wide Green Initiative

MAC Medical is committed to making sound decisions to manage our environmental footprint and protect the environment. Our company-wide green initiative is conscious of our impact on the planet and underscores our commitment to sustainability.



Recycled Material

MAC Medical purchases nearly 1.7 million lbs. of recycled steel each year. Carbon emissions are reduced by 70% when using recycled steel versus newly mined steel. This equates our usage of recycled steel to an approximate 1,884 metric ton reduction in carbon emissions. It is estimated that planting 5 trees reduces 1 metric ton of CO₂. Thus, our usage of recycled steel versus newly mined steel equates to us planting 9,444 trees last year.

Additionally, our corrugated packaging products have a recycled content of 36%. This is comprised of 30% post-consumer fiber (recycled boxes) and 6% pre-consumer fiber (waste created at the mills that is recycled).



Facility Lighting

MAC Medical's manufacturing facility has been outfitted with skylights and energy efficient LED lights. Skylights help reduce the amount of electricity needed to illuminate the working space, while LED lights provide a longer operational life span and an overall reduction in wattage used. In fact, 24,298 watts are saved in our entire facility for every hour LED lights are in use. This reduction in wattage reduces carbon emissions and equates to us planting approximately 150 trees per year.



Manufacturing Practices

MAC Medical practices lean manufacturing to aid in the manufacturing process. Our lean techniques enable us to deliver high quality products at lower costs and ultimately minimizing our impact on the planet. One of those techniques is our investment in fiber laser cutting technology which allows for the maximization of each stainless steel sheet used in production. Even though 100% of our scrap steel is recycled, our fiber laser cutters largely reduce the amount of scrap sent to the smelter.

Warranty Information



Limited Lifetime Warranty

MAC Medical warrants to the original purchaser that its Proprietary Products will be free from defects in workmanship or materials under normal use and service for the life of the product, so long as owned by the original purchaser, according to the limitations set forth below. Defective products shall be repaired or replaced at MAC Medical's option at no cost to the original purchaser provided:

1. The customer must obtain a written return authorization supplied by MAC Medical's customer service department. The product must be returned, properly packaged, with a copy of the original sales receipt and copy of the RMA authorization. Please call (877) 828-9975 or (618) 476-3550 to receive a return authorization.
2. The customer must pre-pay freight charges to and from MAC Medical and must ship merchandise properly packaged, in a way the product will not be damaged during transit to the factory. MAC Medical does not warranty any freight damage to or from the factory. It is the customer's responsibility to inspect the product for packaging damage before signing the BOL.

This warranty does not apply to products, which have been subject to abuse, misuse, accident, modification, alteration, tampering, negligence, lack of routine maintenance or misapplication; or products that have been repaired by other than MAC Medical or its authorized representatives.

This warranty does not apply to glass, fabrics, vinyl, seat coverings, cushions, padding or their stitching, gluing or installation. Component parts not manufactured by MAC Medical, such as casters, caster inserts, any components made from rubber or plastic, circuit boards, fan heaters, plumbing parts, electrical switches and other components are also excluded. For these component parts, MAC Medical will pass on the original manufacturer's warranty to MAC Medical equipment original purchasers. Please consult factory for questions regarding the warranties of these component parts. This warranty does not apply to custom fabricated products. Consult factory.

UNLESS EXPRESSLY SET FORTH IN THIS WARRANTY, THERE ARE NO OTHER WARRANTIES, WHETHER EXPRESS OR IMPLIED, OF FITNESS AND / OR MERCHANTABILITY OR ANY OTHER WARRANTY IMPLIED BY CUSTOM, USAGE OR COURSE OF DEALING.

Liability of MAC Medical under this warranty is limited to the repair and / or replacement of any products. MAC Medical specifically excludes and disclaims any responsibility for any incidental or consequential damages claimed to have arisen from any defect in workmanship or materials. No representative has any authority to change or enlarge the above warranty or MAC Medical liability. This supersedes all previous warranty provisions.

MADE **USA**
IN THE

MAC Medical, Inc.
Publication No. CFU-02 Rev C
March 2024

Information regarding products are
subject to change without prior notice.



Customer needs are our first priority.

Corporate Office
200 Admiral Weinel Blvd.
Columbia, Illinois 62236

Manufacturing Plant
820 South Mulberry Street
Millstadt, IL 62260

Phone: 618-476-3550 • Toll Free: 877-828-9975 • www.macmedical.com