

INSTRUCTIONS FOR USE

Case Cart Shelf Adjustment

Adjusting Shelves

Case Carts can contain solid, perforated or wire shelves. These shelves can be adjusted for various heights within the unit. Shelf liners are not recommended.

Locking Shelves

The shelves can be locked into place in the unit with the shelf latches.



Fig. 1: Rotate Shelf Latch

To lock a shelf, rotate the shelf latch toward the front of the shelf (Fig. 1).



Fig. 2: Snap Latch into Place

Then snap the latch into place over the shelf edge. To unlock, lift up slightly on the shelf and rotate the shelf latch back to its original position (Fig. 2).

Removing Roll Out Shelves

To remove a roll out shelf (solid, perforated or wire), pull the shelf out along its glide until the first two rollers are visible (Fig. 3, circled in red). Then tilt up the shelf to free the first two rollers from the rail and continue to slide out until the second set of rollers are visible. Then lift out the shelf (Fig. 4).



Fig. 3: Pull Shelf Till First Two Rollers Visible



Fig. 4: Pull Out Shelf

INSTRUCTIONS FOR USE

Case Cart Shelf Adjustment

Adjusting Shelf Level for Roll Out Shelves

To adjust the shelf level, first remove the shelf as detailed on Page 1 (Figs. 3 - 4) - **Removing Roll Out Shelves**.



Fig. 5: Press Release Button

Press the button to release the rail (both sides of the cabinet) so that the rails can be moved to another level (Fig. 5).



Fig. 6: Lift Rail Up

Lift the rail up so that the pin disconnects from the slotted vertical side rail (Fig. 6).



Fig. 7: Push Rail Toward Back

Push rail toward the back (Fig. 7).



Fig. 8: Tilt Rail Up

Tilt the rail up and pull forward (Fig. 8).

INSTRUCTIONS FOR USE

Case Cart Shelf Adjustment



Fig. 9: Set Rail in New Position

To set the rail in its new position, align the rail at an angle with the rail slots at the back of the cart (Fig. 9).

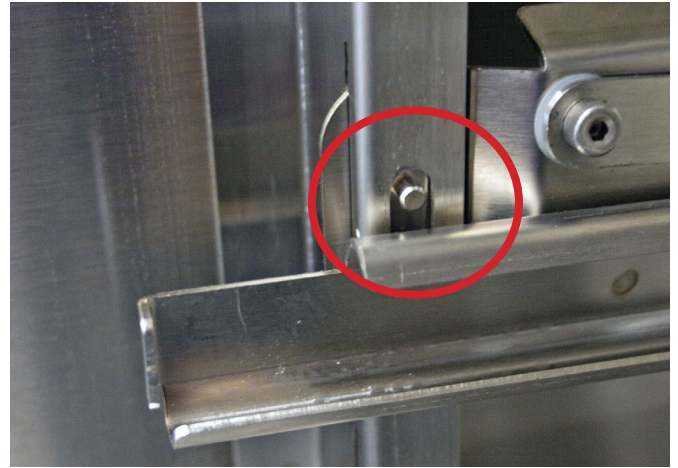


Fig. 10: Slide Rail Down and Forward

Slide the front of the rail down, making sure the pin is behind the slotted vertical side rail. Pull the rail forward and down, so that the release button appears (Fig. 10).

Reinstall the shelf after both rails have been adjusted to the new height.