



INSTRUCTION MANUAL



Add-on Scrub Sink Timer Kit for Installation on Economy Processing Sinks

! CAUTION

Read and understand all of the instructions and safety information in this manual before operating this product.

Table of Contents

Parts List for S0202-EST-KT.....	3
Plumbing Installation.....	4
Timer (S0050) - Specifications and Terminal Connections.....	7
Terminal Wiring Connections and Battery Replacement.....	8
Timer Operation Display and Programming.....	9
InLine Flow Switch Timer Controller (S0130-01) Specifications, Switch Rating and Wiring Diagram.....	10
Switch Timer Controller Maintenance.....	11

DESCRIPTION OF PRODUCT

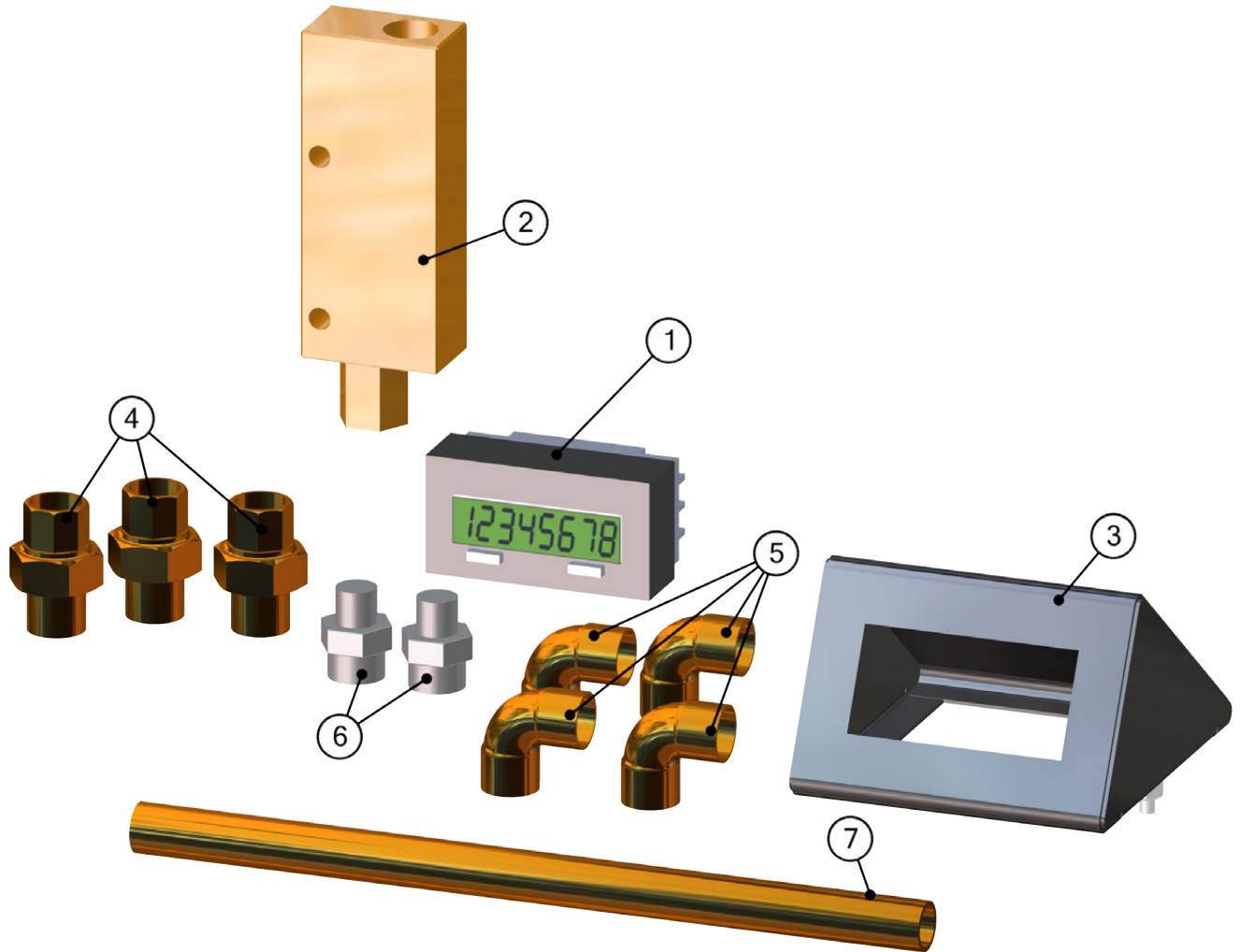
This product regulates the elapsed time for water flow of scrub sinks.

PURPOSE OF THIS MANUAL

This manual provides the specifications, parts lists and installation and Timer setup/programming instructions for the devices contained in this kit.

KEEP THIS MANUAL

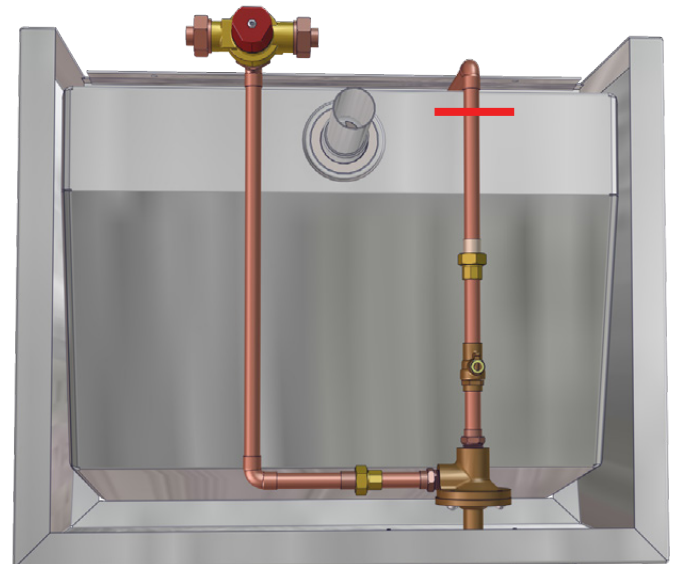
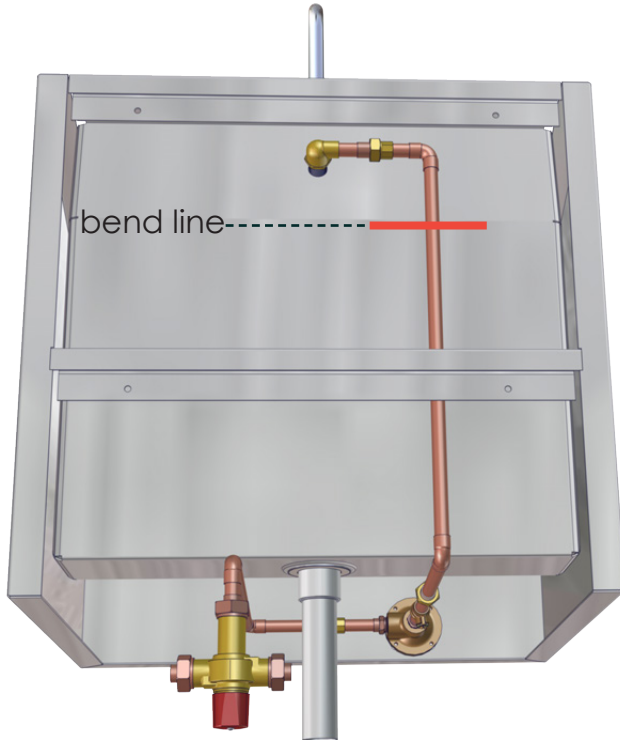
Parts List for S0202-EST-KT



Item #	Part #	Description	QTY
1	S0050	Timer, Eagle	1
2	S0130-01	Inline Flow Switch Timer Control - Brass	1
3	S0090-01	Timer Housing Weldment	1
4	S0019	Union 1/2" Copper	3
5	S0049	Elbow, 1/2" Copper 90	4
6	S0165	Pipe Fitting Reducer, 1/2' Sweat X 1/4" Npt Male	2
7	S0069	1/2 Copper Hard Type L Cierro Brand 10' Links Only	3 ft.

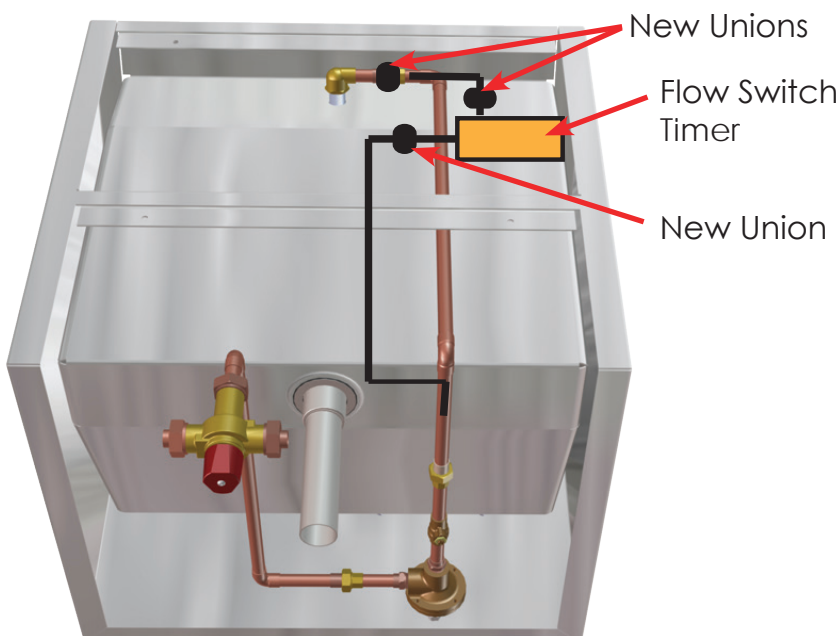
Plumbing Installation

The plumbing configuration on the sink before adding on the timer looks like the illustration below.



Cut pipe 2 inches below elbow (see red cut line).

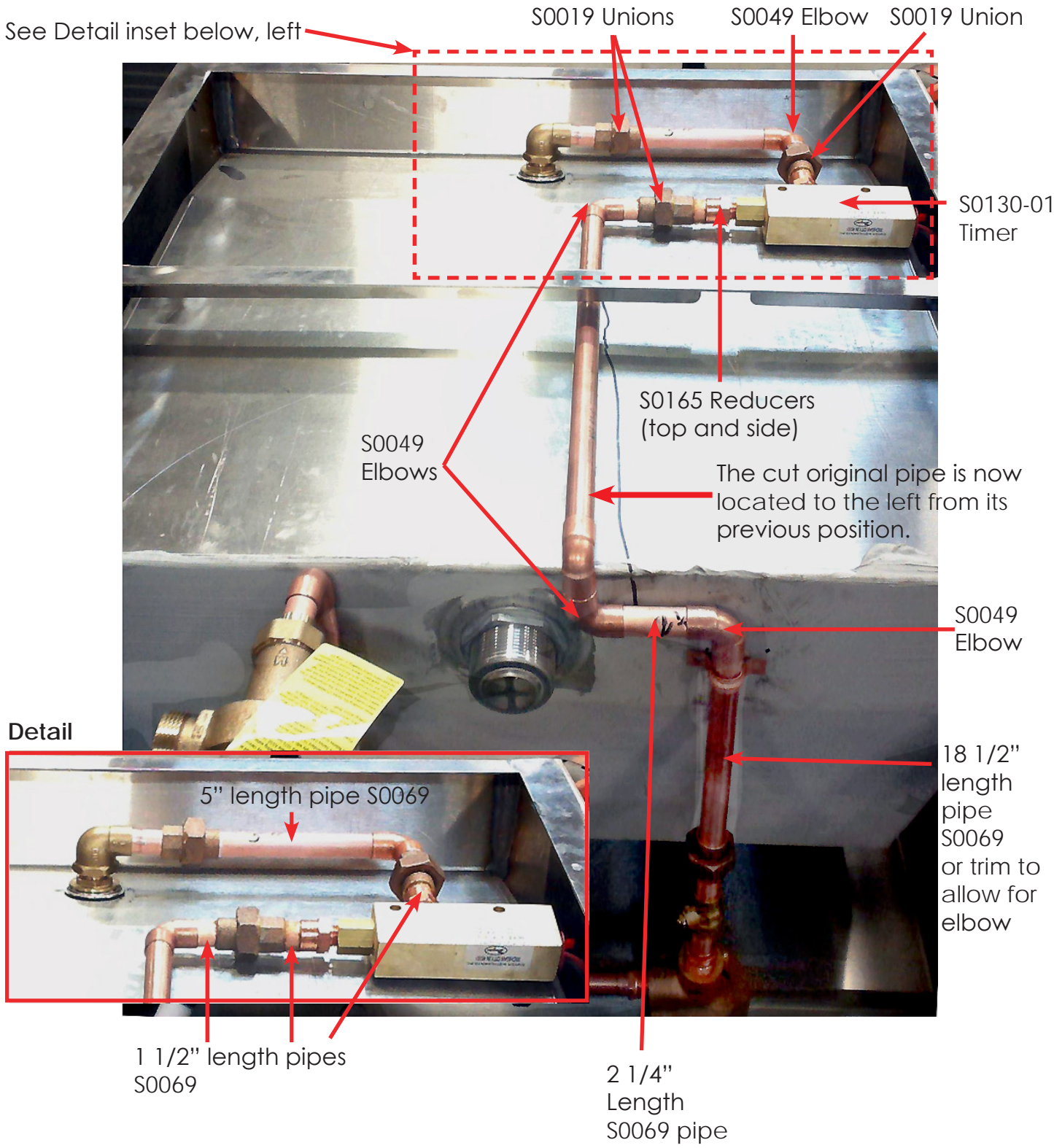
Cut the long, L-shaped pipe at the bend location on the back side (see red cut line).



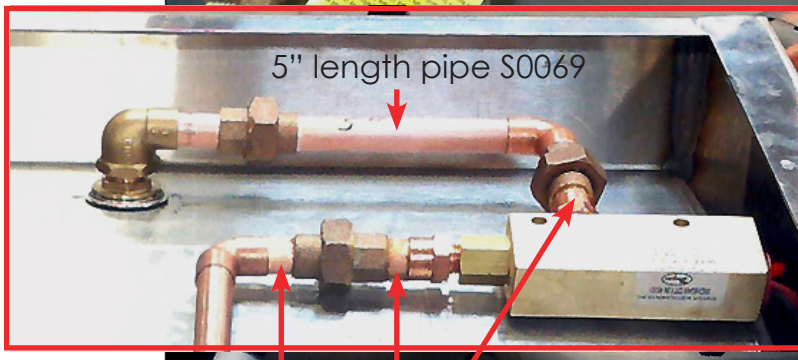
After the cuts, the original pipe will be relocated on the sink. The sketch at left shows the new plumbing configuration (outlined in black and showing unions and timer location).

In the new plumbing configuration, use the kit plumbing items (flow-switch timer, two reducers, three unions, four elbows, additional pipe length) to reroute the plumbing as shown in the photo on the next page.

Note: S0069 pipe lengths shown are approximate and may vary according to original plumbing straightness.

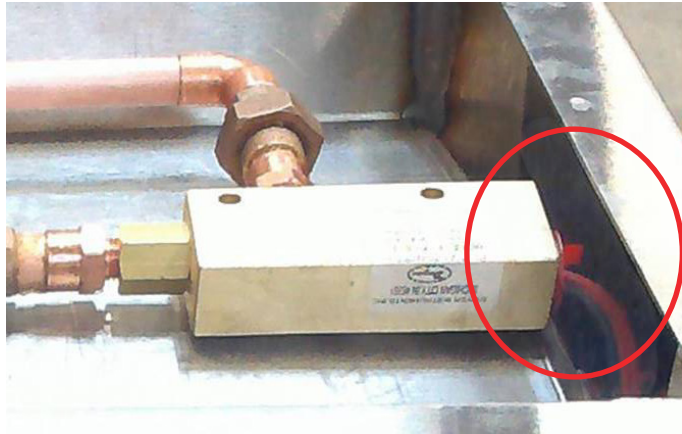


Detail



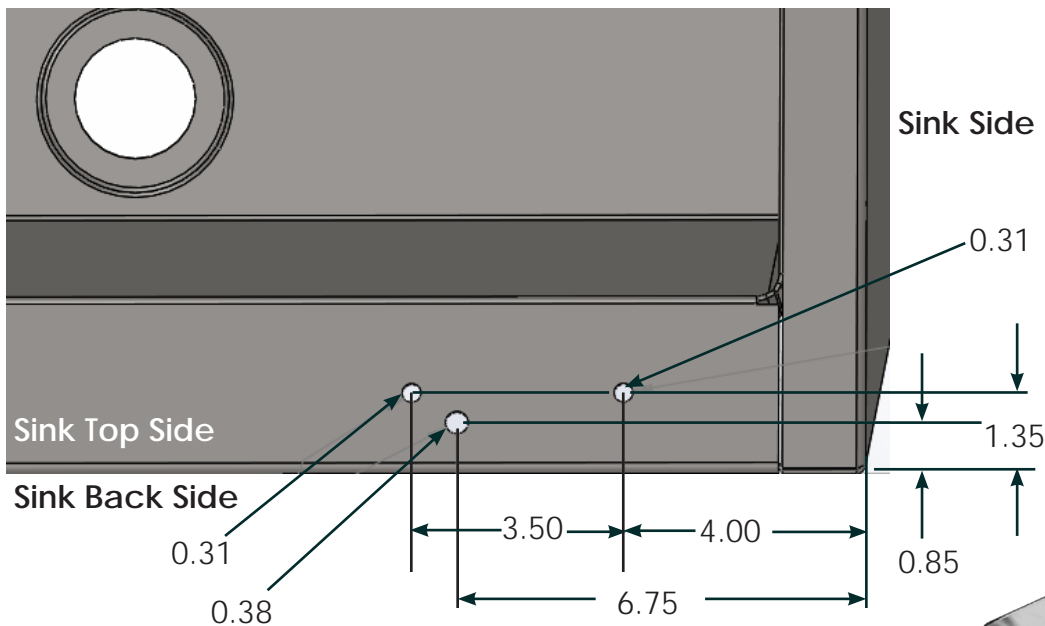
Solder all new pipe connections together.

Flow-switch Timer wiring runs up the interior side of the sink for connection to the read-out on the top of the sink (see red circled area).

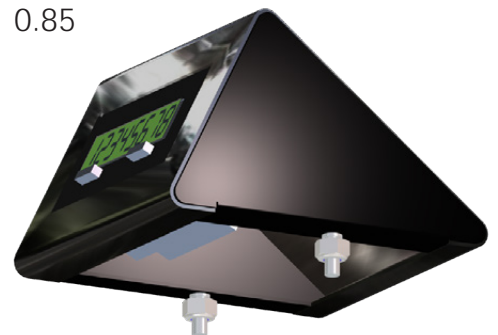


To mount the timer housing on the sink top, drill three holes using the hole dimension sizes and locations as shown in the illustration (below). Two holes are for mounting the timer housing, one for threading the three flow-switch timer wires to the top side for connection to the timer read-out.

Place a grommet in the wire threading hole. (Grommet to be supplied by others.)



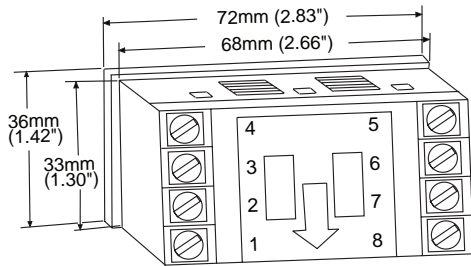
Mount the timer housing to the top of the sink in the 0.31 diameter drilled holes. Mounting studs are provided on the housing. Secure to sink top with nuts (provided by others).



Timer (S0050)- Specifications and Terminal Connections

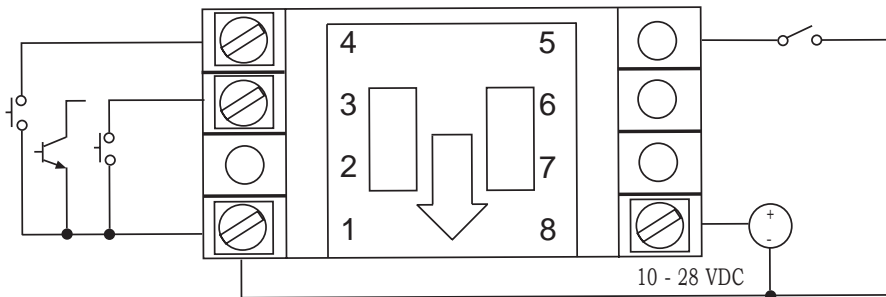
The timer is an Elapsed Time Indicator that is powered by an internal 3 volt lithium battery. It comes pre-assembled in its housing and ready for mounting to the sink.

Specification	Description
Start/Stop Input	NPN, Contact Closure; Accumulates time when connected to common; Low State: < 1.0 VDC, High State: > 2.0 VDC (28VDC max)
Security Input	Allows access to panel reset and programming features
Remote Reset Input	NPN or Contact Closure to common; level sensitive
Power Source	Single or dual 3V Lithium battery; typical 5 years life w/single battery, 10 years w/dual batteries
Ranges & Resolution	Seconds, minutes to 1/10, hours to 1/10, hours: minutes: seconds
Display	12 mm high, Supertwist LCD; 7 digits; "Low Bat" indicator
Backlighting	Green Illumination over whole viewable area. Requires 10 to 28 VDC power source
Dimensions & Mounting	See dimensions picture below. Panel Mount with supplied mounting bracket and gasket
Connections	Screw terminals
Weight	Approximately 64 grams (2.25 ounces)



Dimensions of Timer

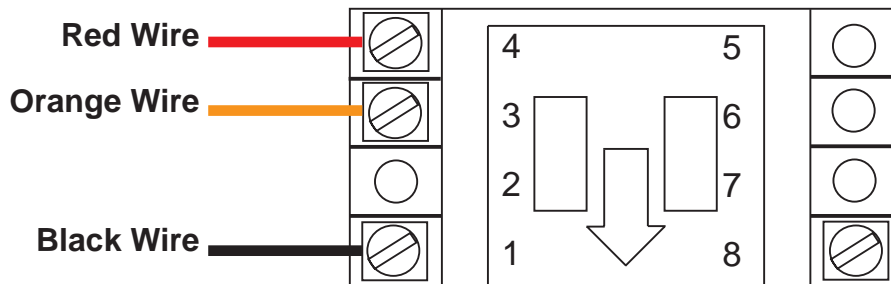
Rear Terminal Connections



- | | |
|--|--|
| 1. Common | 5. Front Panel Program Enable - Allows access to program mode when tied to common |
| 2. Not Used | 6. Not Used |
| 3. Timing Enable - NPN or dry contact inputs | 7. Not Used |
| 4. Remote Reset - Resets time value when tied to common | 8. DC Supply Input - For backlighting |

Terminal Wiring Connections and Battery Replacement

After threading the three flow-switch timer wires through the drilled hole on top of the sink, connect them to the timer read-out terminal connections as shown in the illustration below:

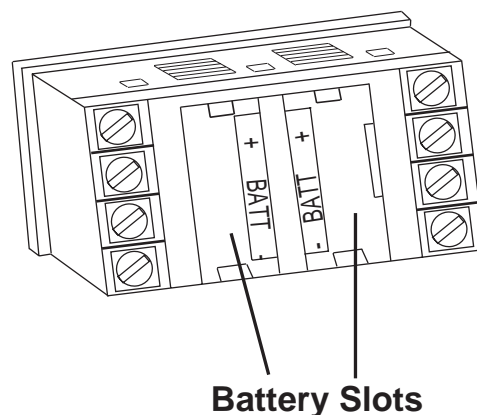


Battery Replacement -

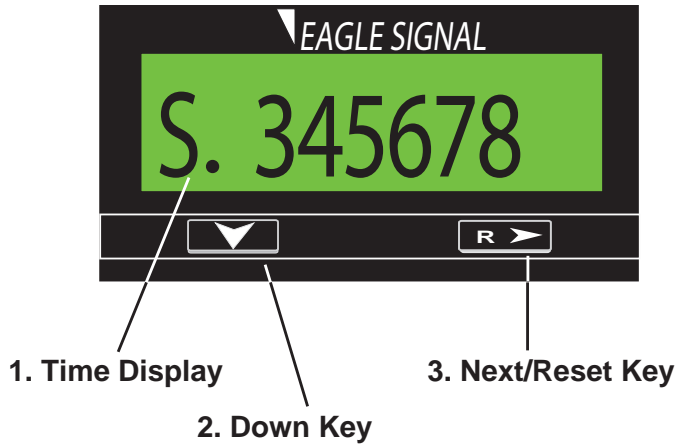
The unit is shipped with one CR ½ AA size 3V Lithium battery, which is pre-installed.

To change the battery, remove the battery cover by pushing inward and down. Install the battery in either of the two slots. The unit runs on a single battery, and the second slot is provided to allow for installing a new battery before removing the old one, retaining count total and program data. The unit can also be run on two batteries to extend the battery life to 10 years.

Once the battery is in place the unit will go into a self test mode, and all the segments on the LCD display will be illuminated. The self test mode is exited by depressing the Next key, which will then display the model number (6). Depress the Next key again to ready the unit for operation.



Timer Operation Display and Programming



Time Display: Accumulates time when the timing start input is active. Timing will not take place when the external or front panel reset is active. The leftmost digit is the time value legend.

Down Key: When the program input is active this key is used to scroll through the menu items. After a menu item has been chosen for editing, the down key is used to set the value for the currently selected (flashing) digit.

Next/Reset Key: Resets the accumulated time if Front Panel Reset is enabled in Programming Mode. When the program input is active this key is used to select a menu item for editing (leftmost digit will begin to flash) and then move to the desired digit to be changed.

Programming -

Programming parameters can be accessed, when the Program Enable input is active, by pressing the Down key. To edit a parameter use the Down key to scroll until the desired parameter appears on the screen. Pressing the Next key will cause the leftmost digit of that value to begin to flash. Use the Next and Down keys in combination to choose individual digits and change their value.

1. on **Front Panel Reset Enable:** When active (ON) the time value, when being displayed, can be reset by pressing the Next/Reset key. If set to OFF, the time value can only be reset through the remote input.

S. _____ **Time Format:** Sets the units in which the elapsed time will be accumulated. Use the next key to scroll through the available choices: Seconds, Minutes (_ _ _ _ . _), Hours (_ _ _ _ . _) , Hours: Minutes: Seconds.

Note: On initial start-up, as well as after any programming changes, it is necessary to reset the unit before beginning operation

InLine Flow Switch Timer Controller (S0130-01) Specifications, Switch Rating and Wiring Diagram

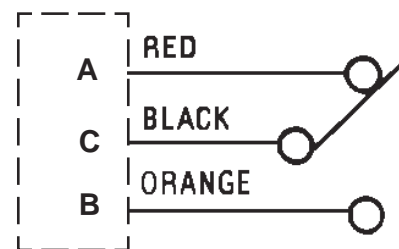
This is an explosion-proof brass flow switch, actuation set point 0.50 GPM (1.89 LPM), and calibrated for water at standard conditions. It is used for accurate detection of excessive or insufficient flow rates.

Service	Compatible liquids
Wetted materials	Housing: brass; Piston: polysulfone; Spring: 316SS; O-Ring: Fluoroelastomer, Other: Epoxy
Temperature Limits	-20 to 225°F (-29 to 107°C)
Pressure Limits	1000 psig (68.9 bar)
Accuracy	±10% of set point
Repeatability	±1%
Switch Type*	SPDT, 20 VA
Electrical Rating	.17 A @ 120 VAC, .08 A @ 240 VAC, .13 A @ 120 VDC, .06 A @ 240 VDC
Electrical Connection	18 AWG, 24" (60.96 cm), Polymeric lead wires
Process Connection	1/4" female NPT
Mounting Orientation	Any position. Set points shown are based on vertical, inlet down position.
Required Filtration	50 microns or better
Weight	0.66 lb (301 g)
Agency Approval	CE

*Switch Ratings
Max Resistive Load

VA	Volts	Amps AC	Amps DC
20	0-30	.4	.3
	120	.17	.13
	240	.08	.06

Typical Wiring Diagram



Pin Connections for
Units with MS Receptacle

This unit was calibrated in a vertical position, with lead wires up. Install unit in piping system, using standard pipe fitting procedures. Be sure to keep thread sealing compound out of unit. Make sure that flow is in proper direction - marked "IN" and "OUT" on housing. See wiring diagrams for electrical connections.

CAUTION: See "Switch Ratings" before connecting power.

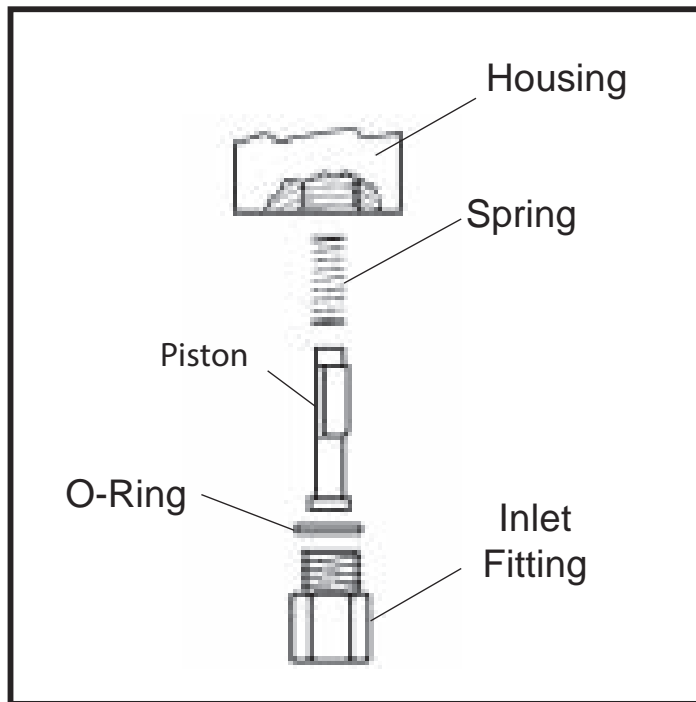
CAUTION: Flow settings for this switch is normally calibrated using water at +70°F on increasing flow. Water-calibrated units are not recommended for air/gas applications.

Switch Timer Controller Maintenance

Accumulation of foreign debris should periodically be removed from these switches. Occasional "wipe-down" cleaning when excessive contamination is present is all that is normally required.

To Clean: Remove unit from system and disassemble as shown below. Clean all parts, reassemble and reinstall unit.

Note: 50 micron filtration is recommended.



To place an order, contact our customer service department at **618-476-3550** or **877-828-9975** or by email at sales@macmedical.com

MADE
IN THE **USA**

INSPIRED
TO BE BETTER

Customer needs are our first priority.

MAC Medical, Inc.
Printed in USA
Publication No. MAN-028 Rev B
August 2021

Information regarding this product is subject to change without prior notice.



Corporate Office
200 Admiral Weinel Blvd.
Columbia, Illinois 62236

Manufacturing Plant
820 South Mulberry Street
Millstadt, IL 62260

Phone: 618-476-3550 • Toll Free: 877-828-9975 • www.macmedical.com